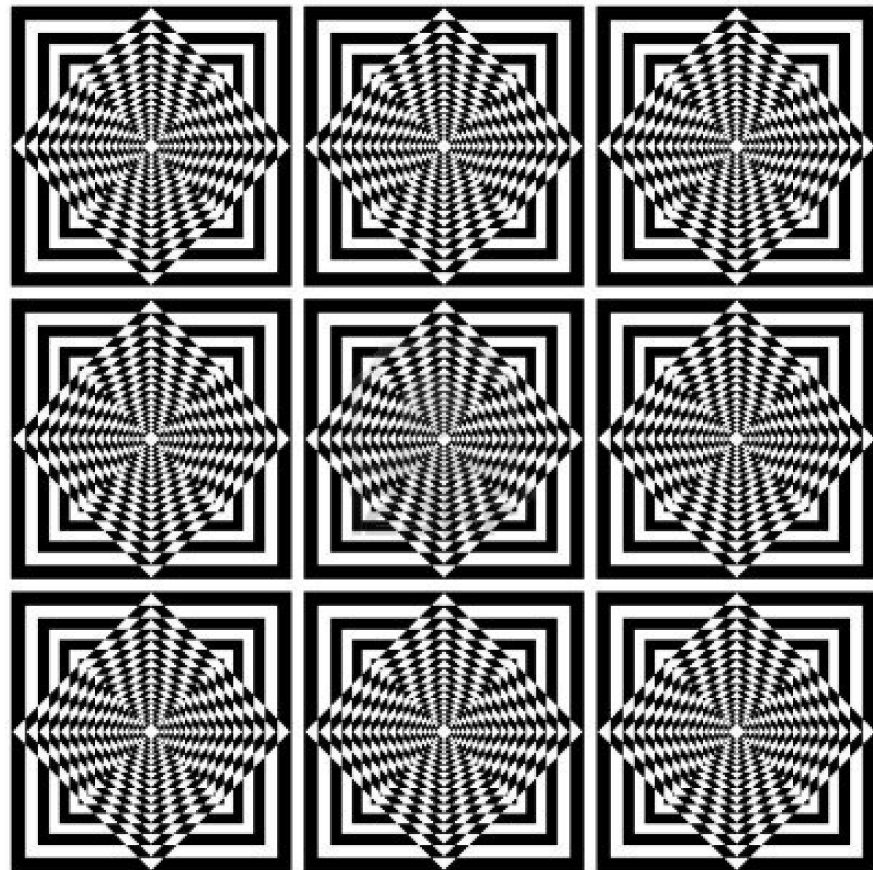
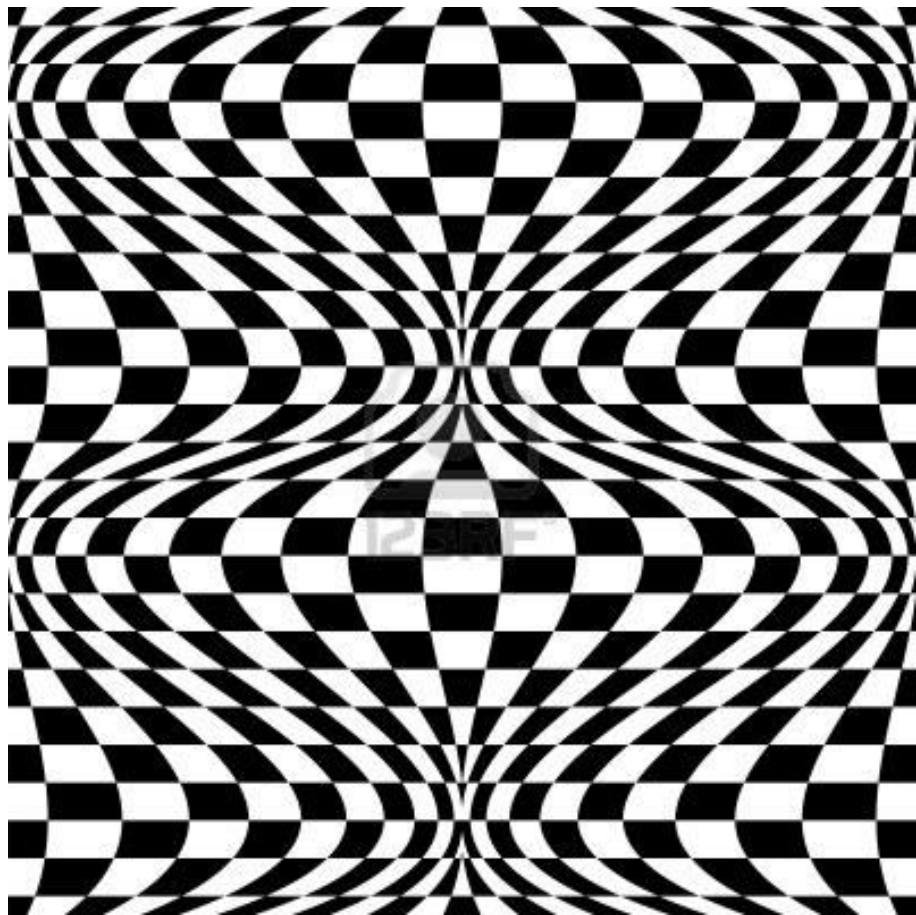
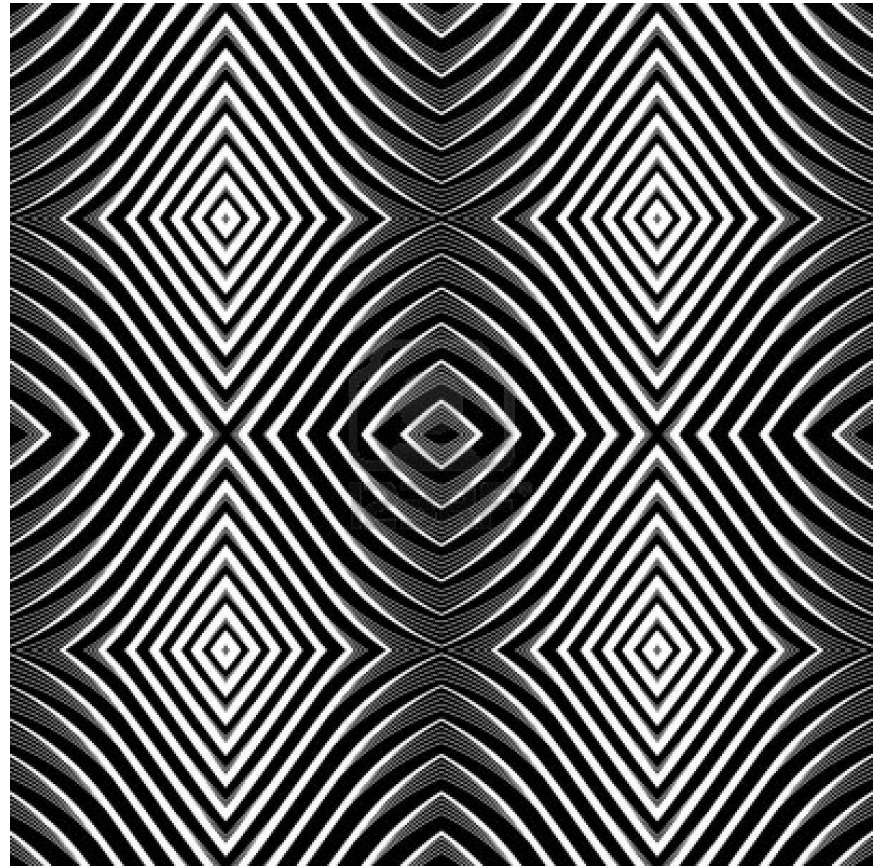
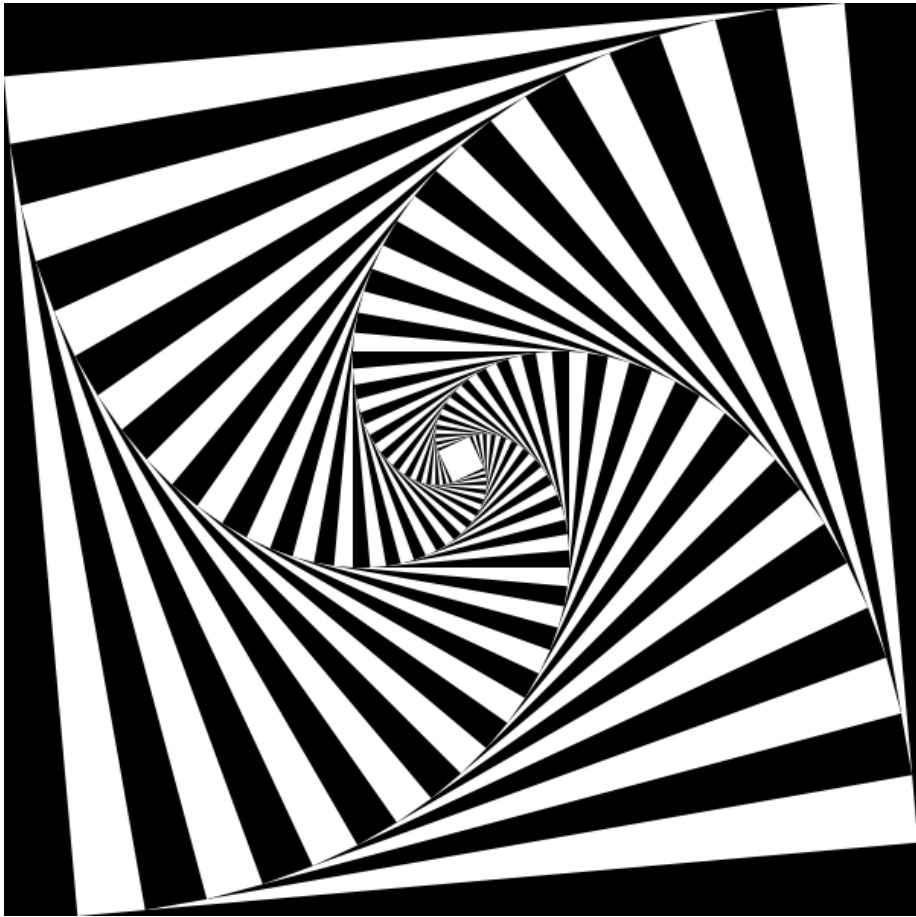


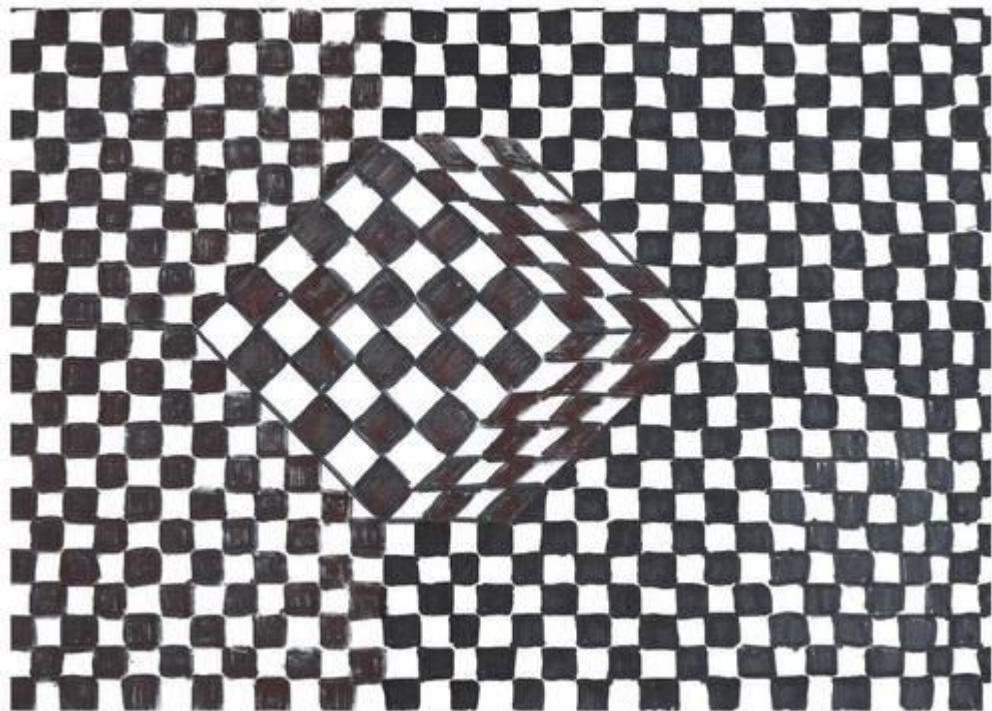
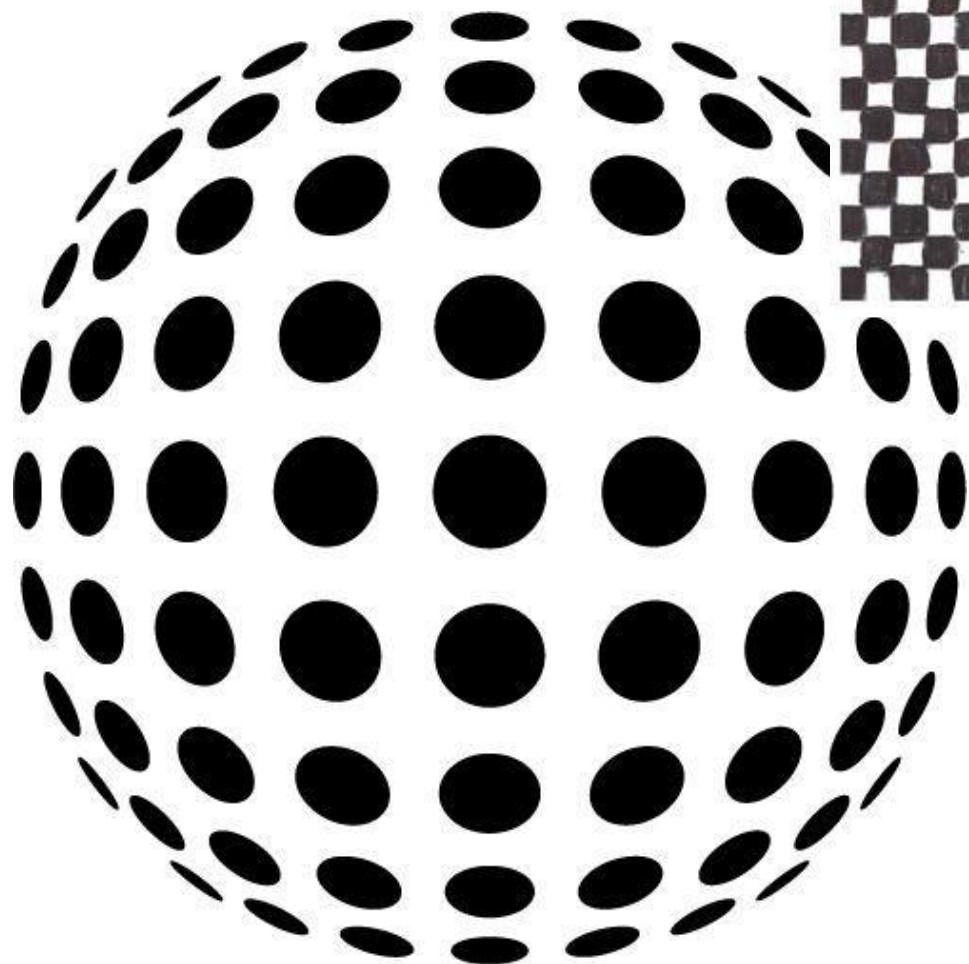
Op-art

i

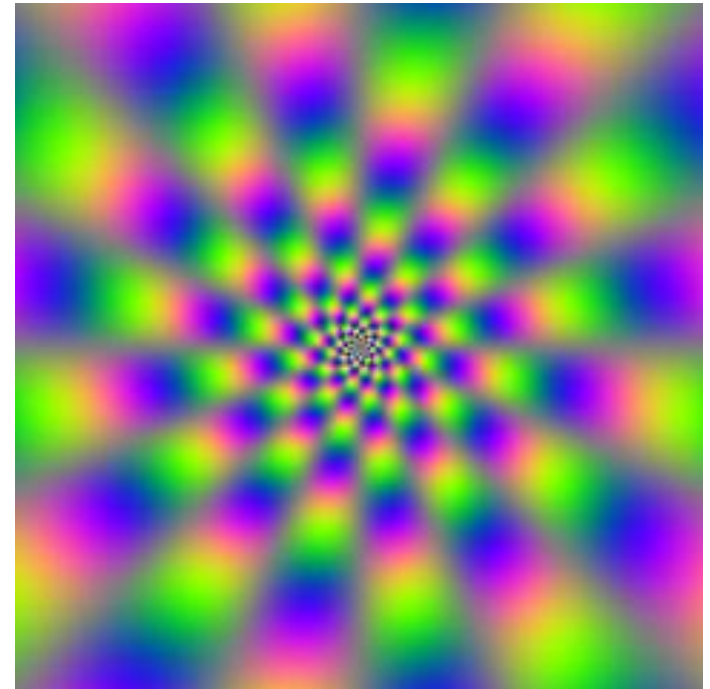
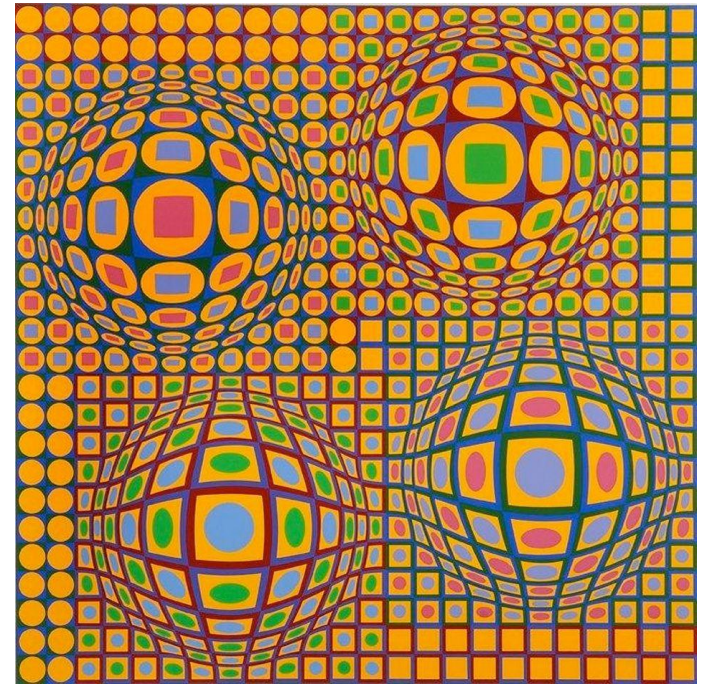
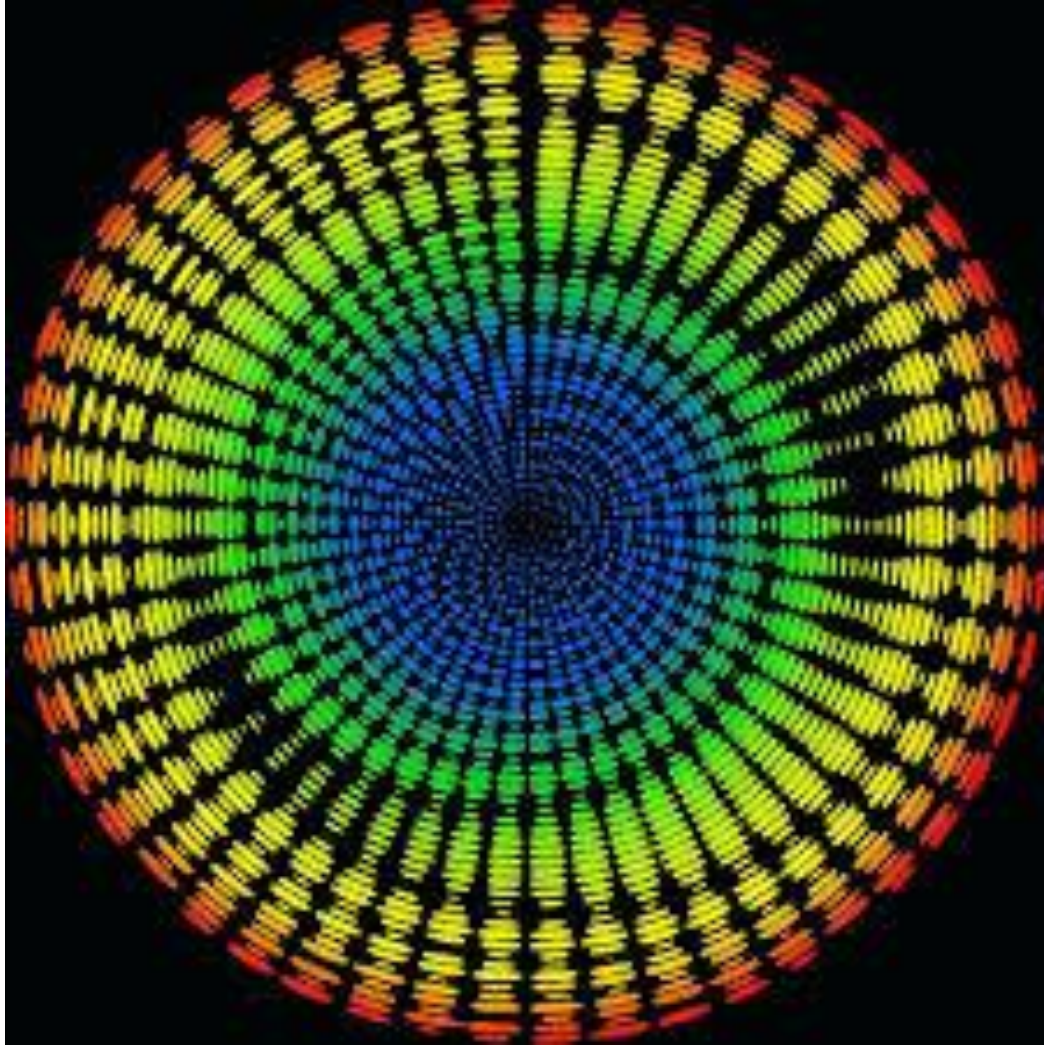
matematyka





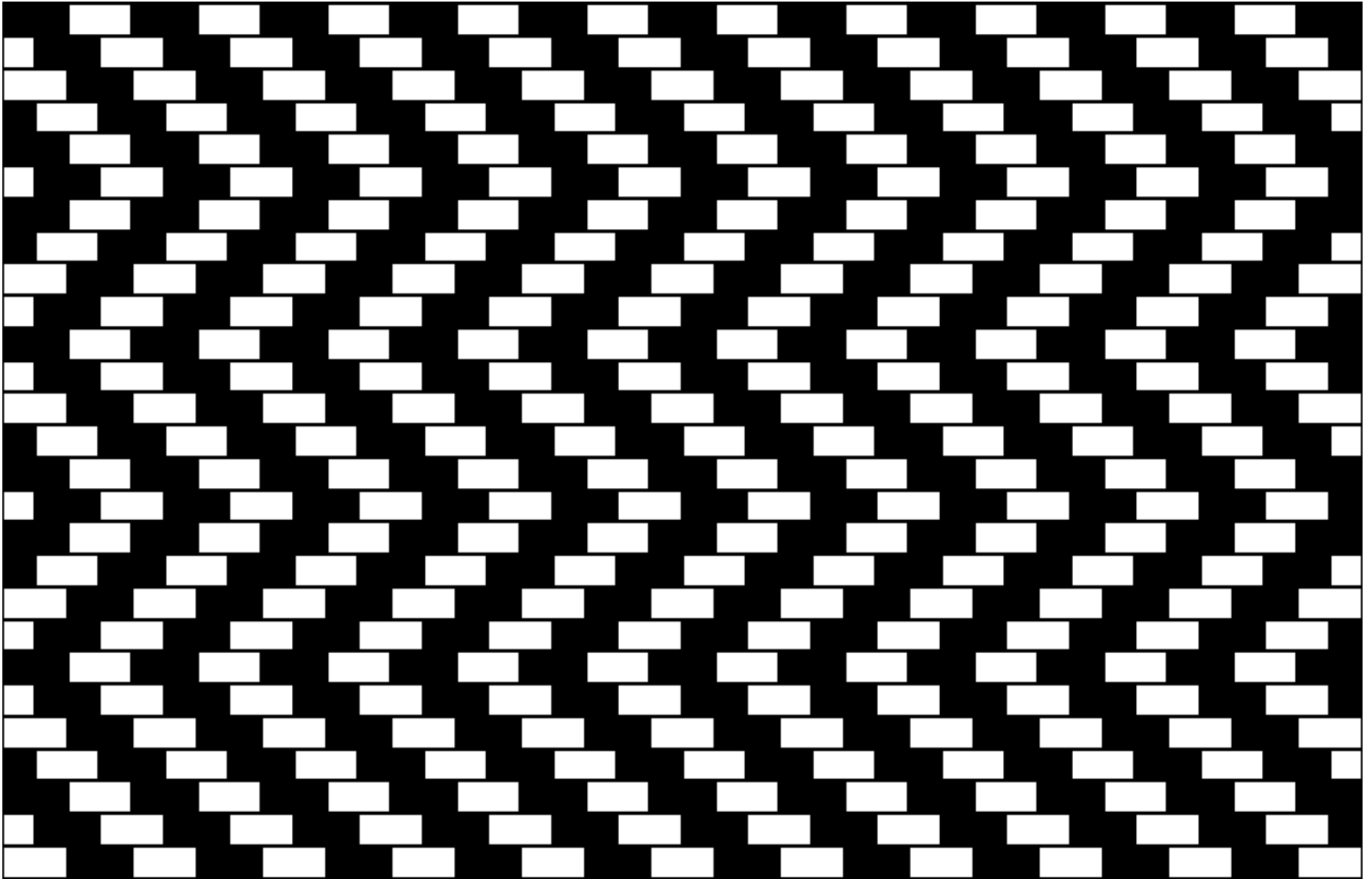




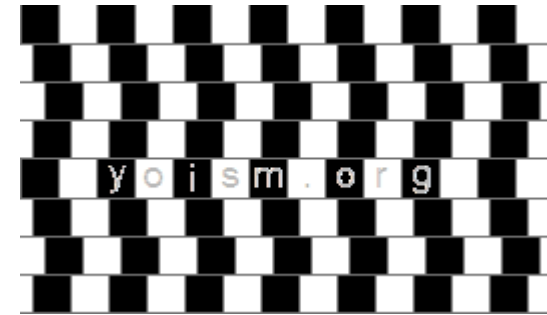


sztuka optyczna, wizualizm - lata 50. i 60. XX wieku

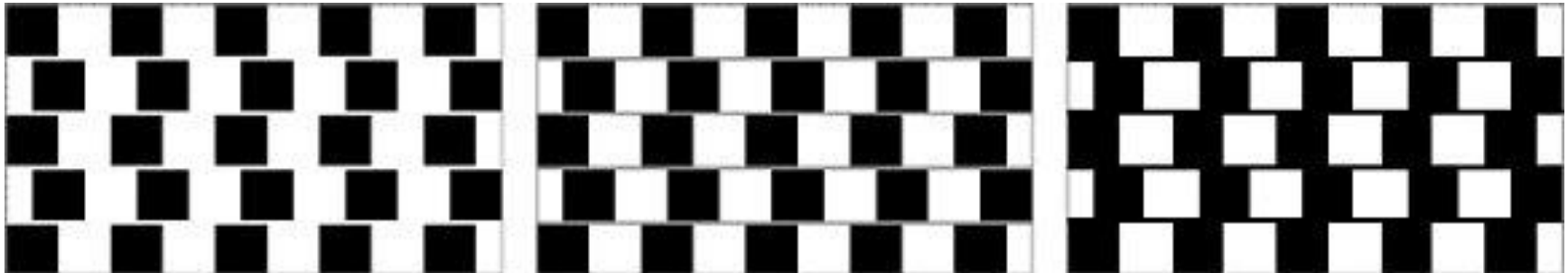
- oddziaływanie na oko, nie na intelekt lub emocje
- abstrakcja geometryczna
- kontrast, powtórzenie, modularność
- porządek i chaos
- łamanie symetrii, niejednoznaczność
- wrażenie faktury, dynamiki, głębi, światła, wilgoci
- złudzenia optyczne, powidok, efekt soczewki
- hipnotyzujący efekt



Cafe Wall Illusion



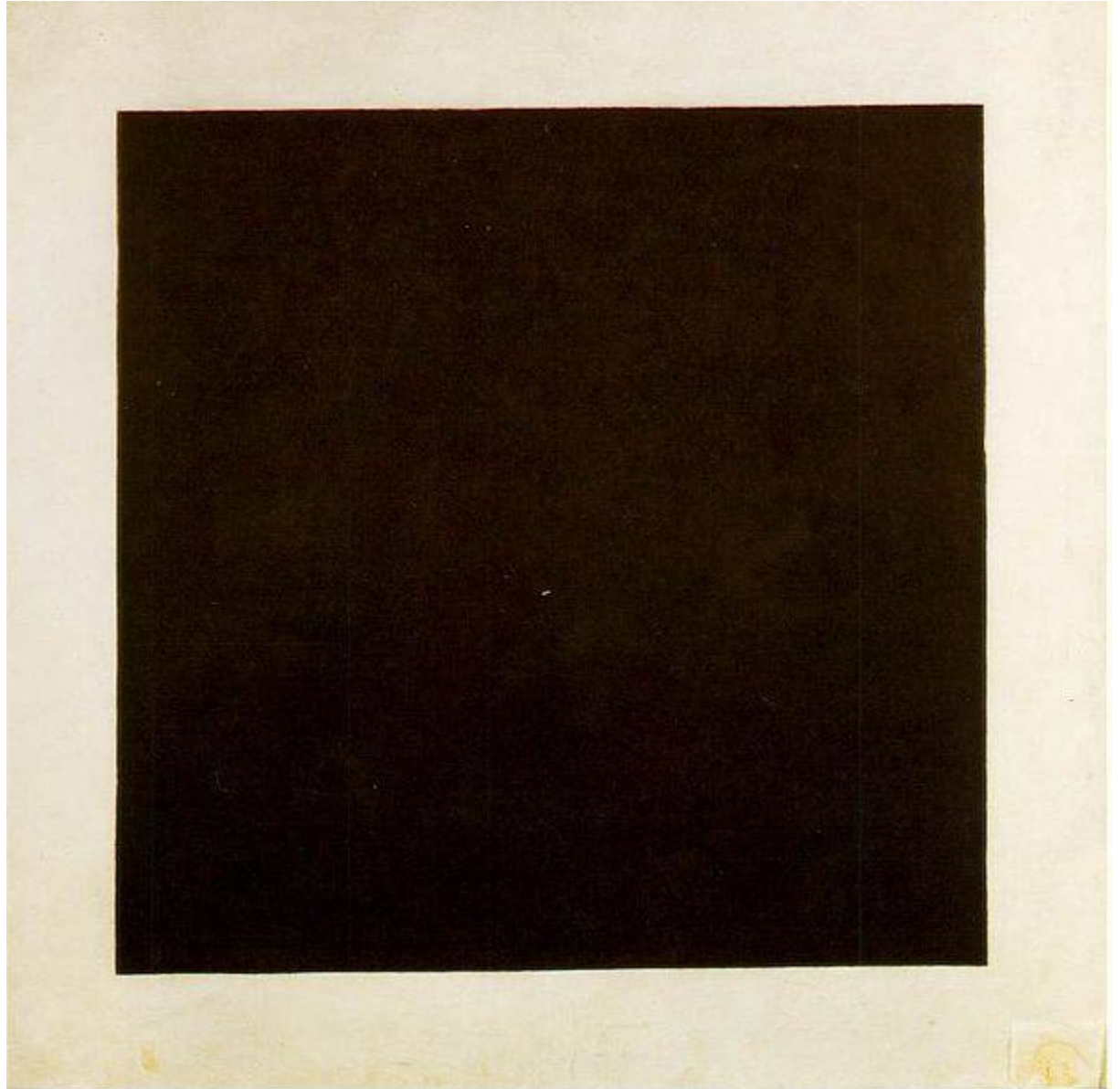
kawiarnia Rio (obecnie Roxy) u podnóża St Michael's Hill, Bristol (UK)



MAURITS CORNELIS ESCHER (1898-1972)

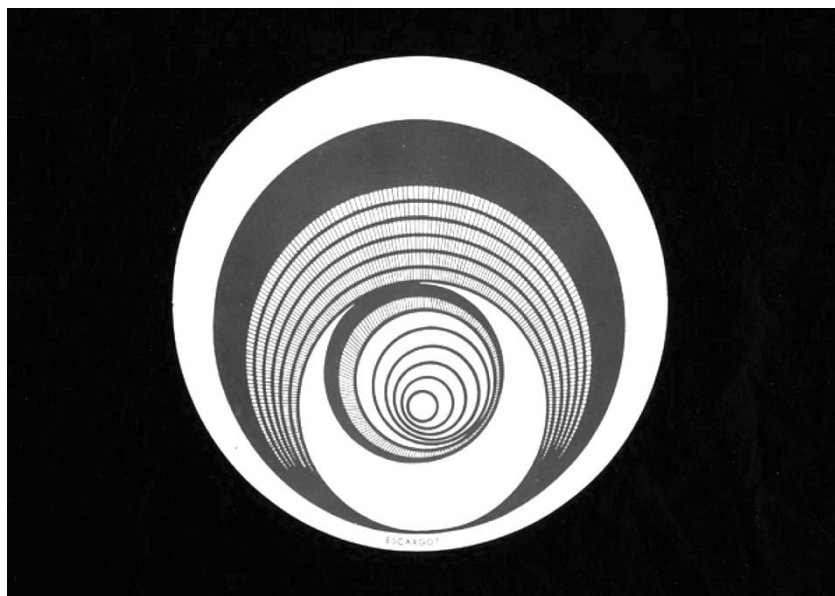


KAZIMIERZ MALEWICZ (1879-1934)
prekursor suprematyzmu

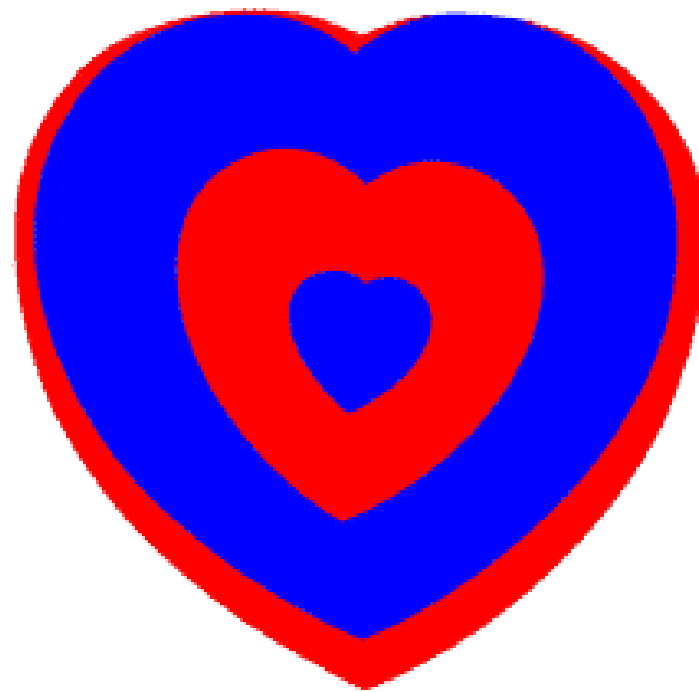


Czarny kwadrat
na białym tle
1915

MARCEL DUCHAMP (1887-1968)
twórca op-artu

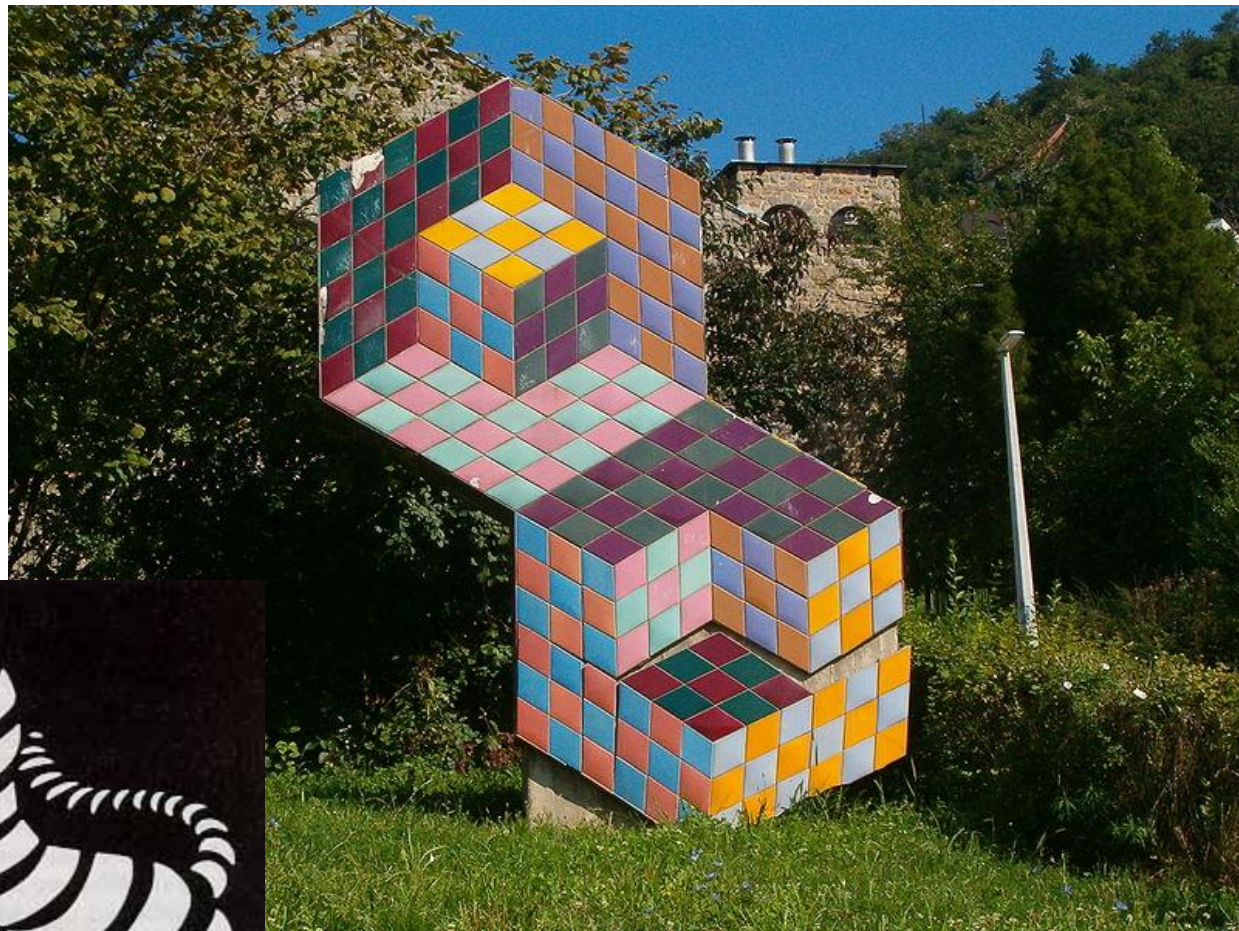


Rotoreliefs 1935

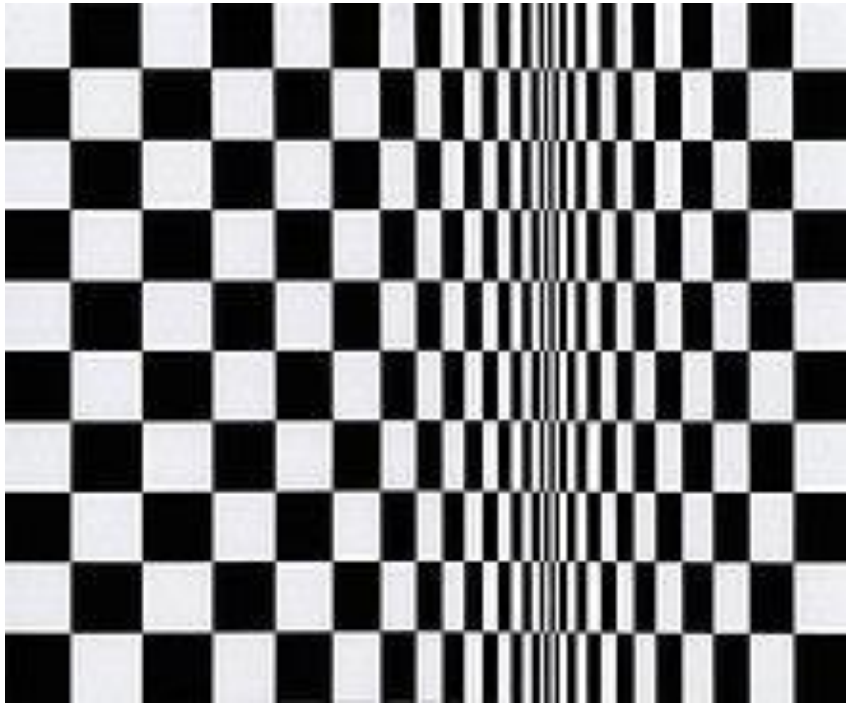


Fluttering Hearts 1936

VICTOR VASARELY (1906-1997)



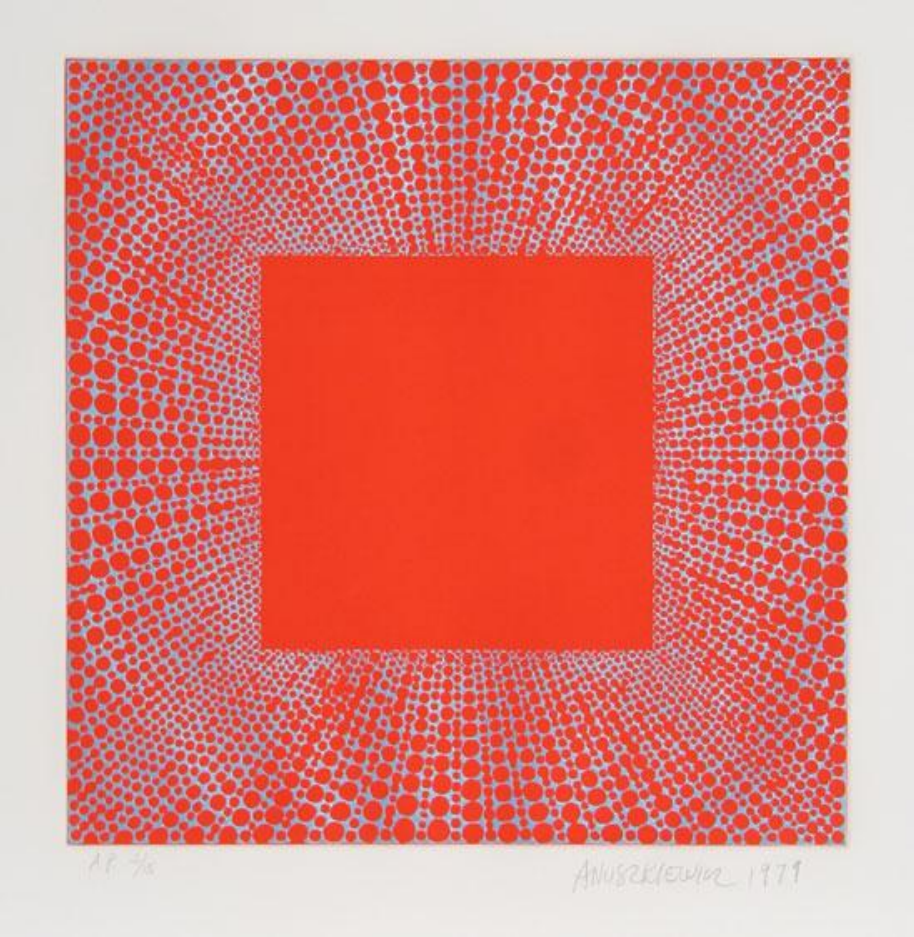
BRIDGET RILEY (1931-)



Detail from

*In Christopher Carter - 64
Bridget Riley.*

RICHARD ANUSZKIEWICZ (1930 -)





Marcel Duchamp, Portret wielokrotny, 1917



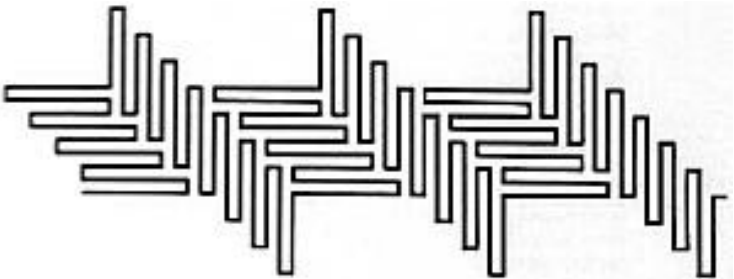
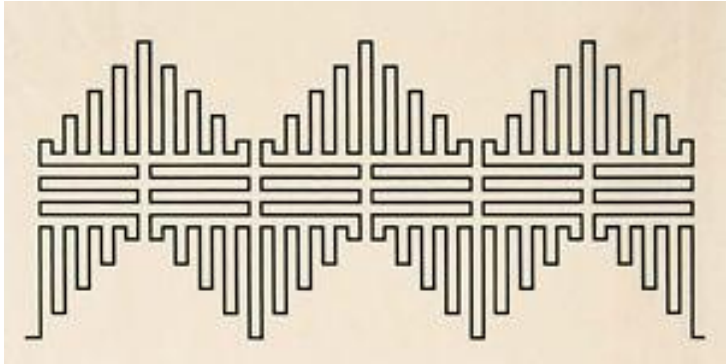
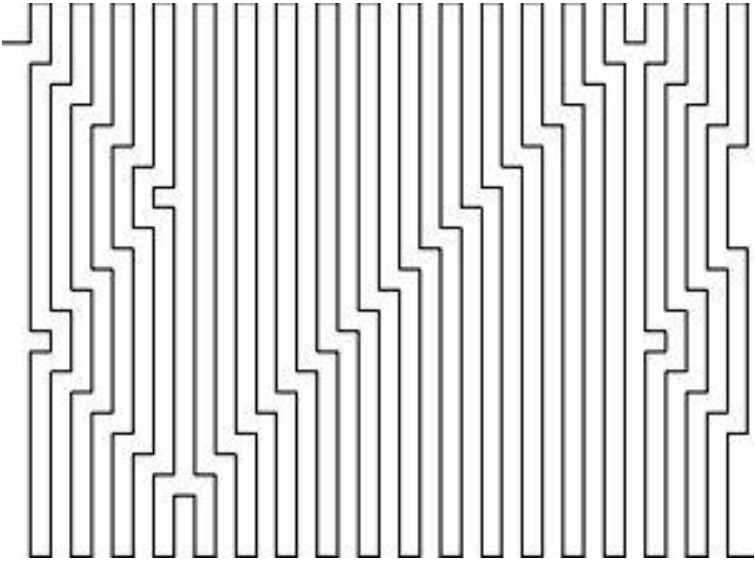
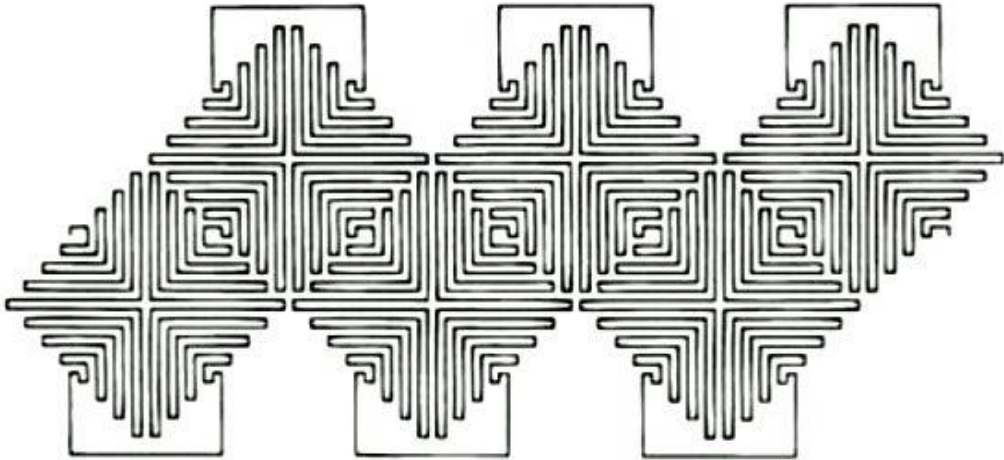
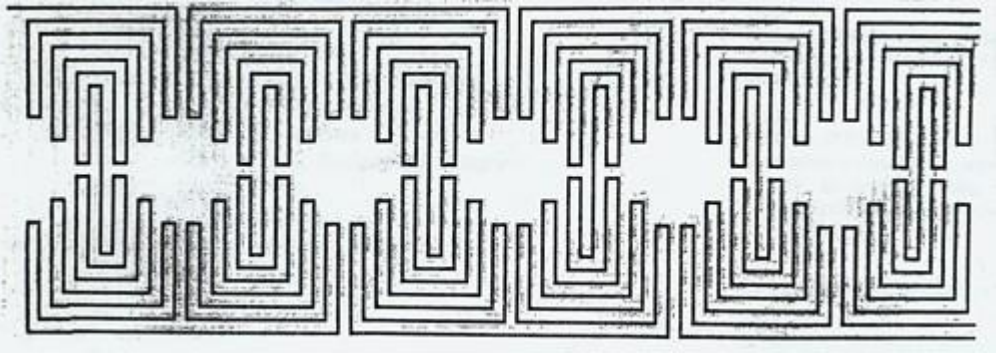
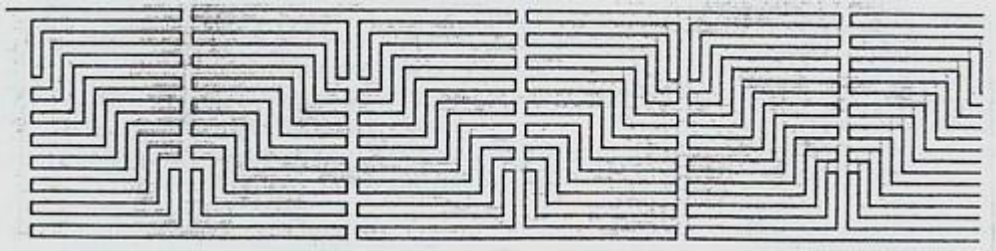
Stanisław Ignacy Witkiewicz, Portret wielokrotny, 1917

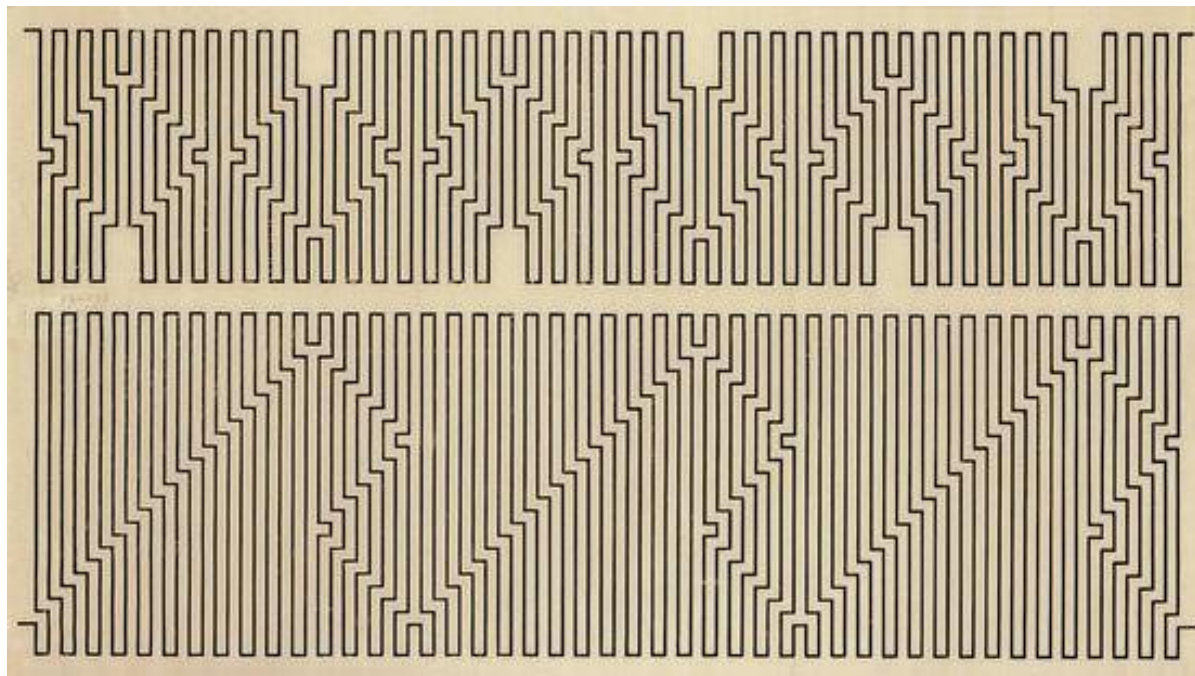
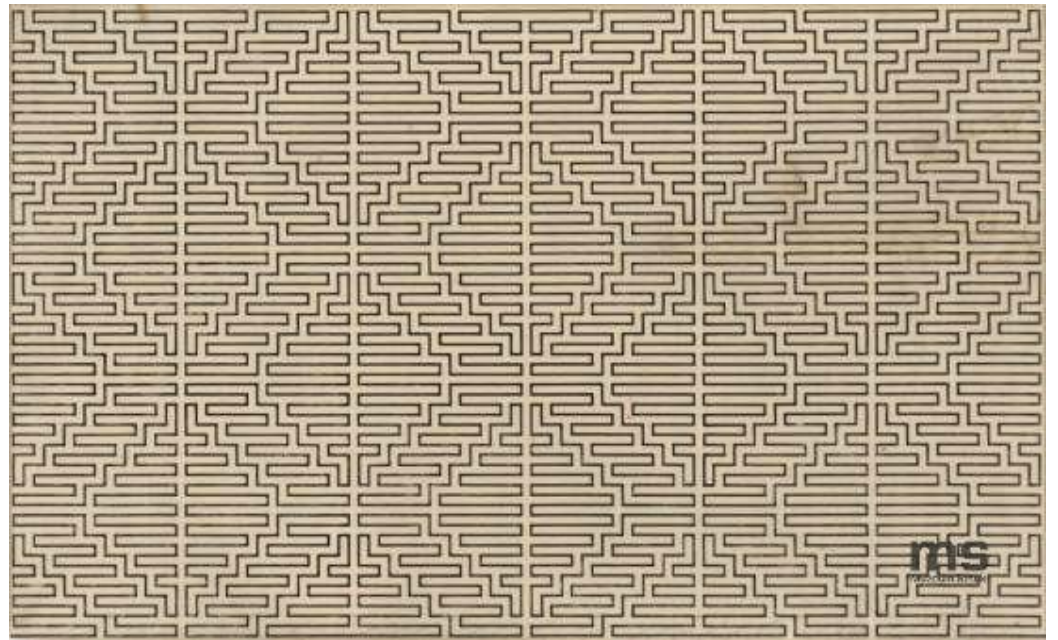
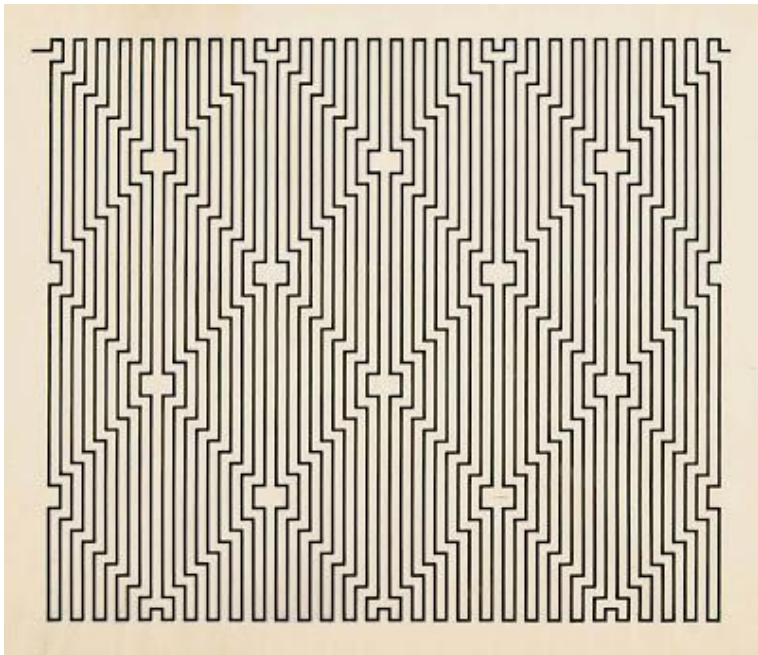


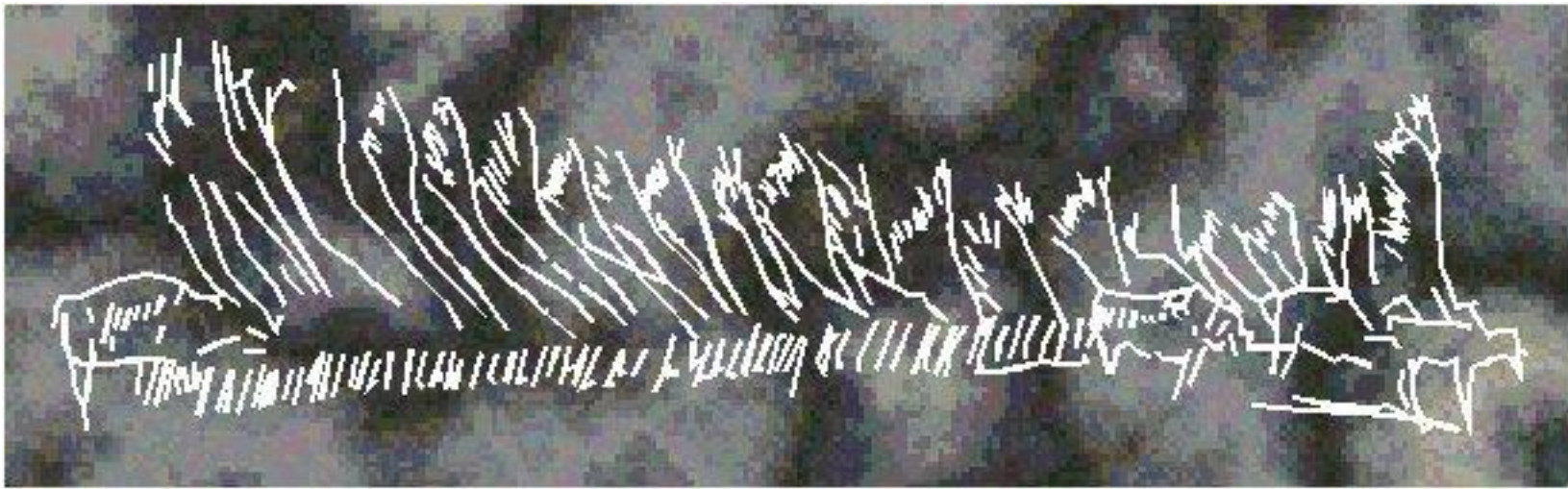
1912



WACŁAW SZPAKOWSKI (1883-1973)



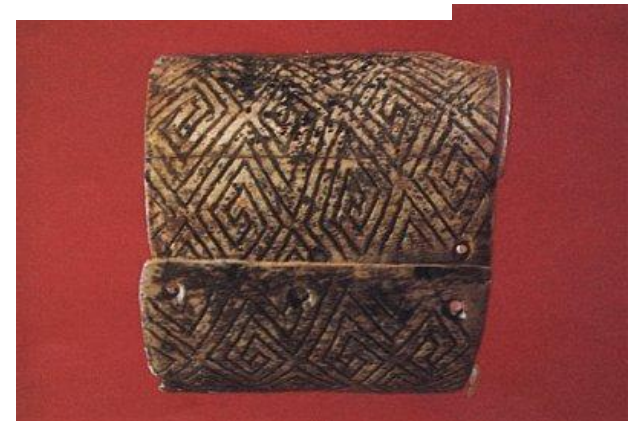


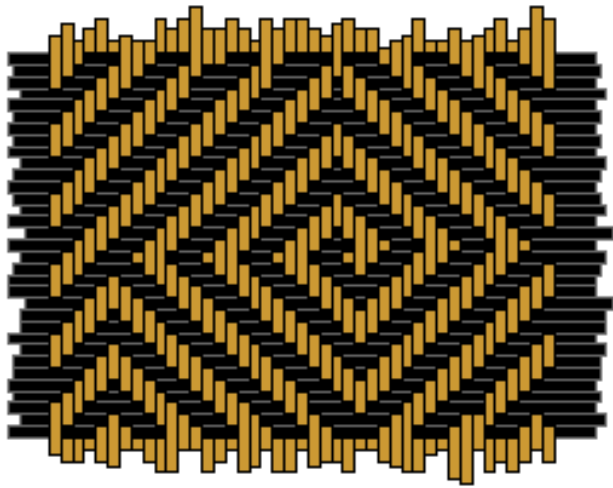


paleolit

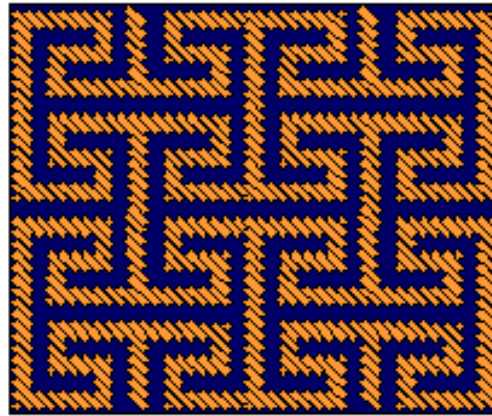


23 000 BC

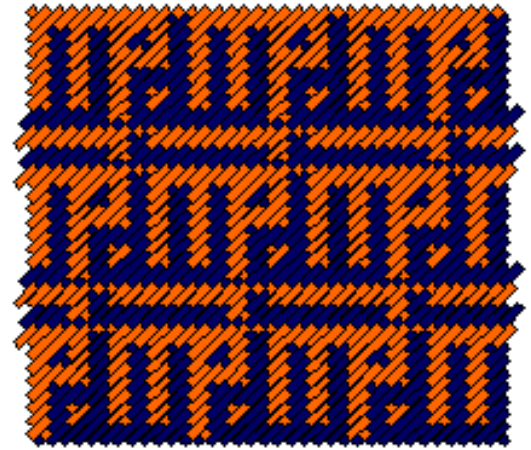




Amazonia



Guyana Bryt.



Egipt



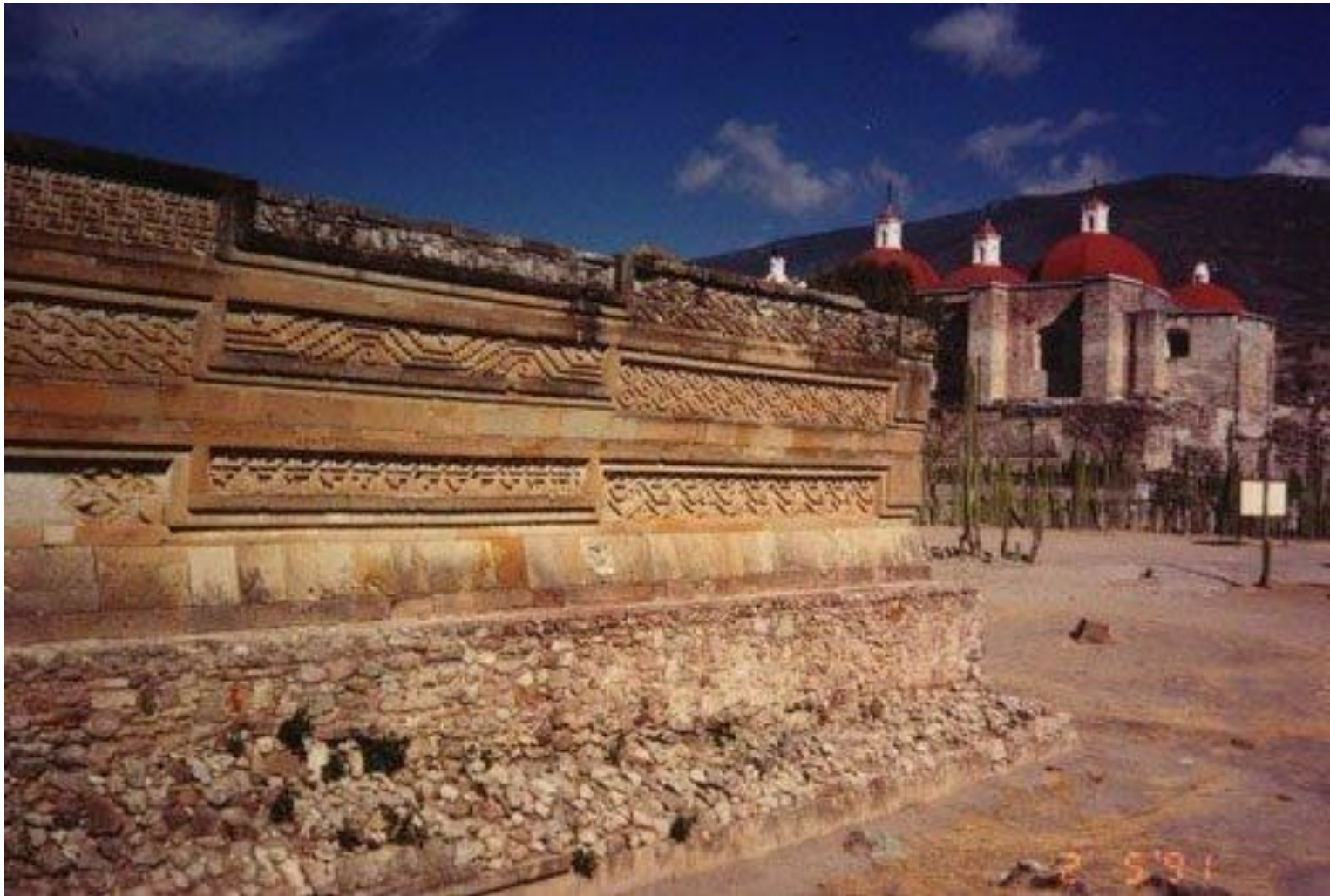
Vinča, Serbia

Tisa, Węgry

Vadastra, Rumunia

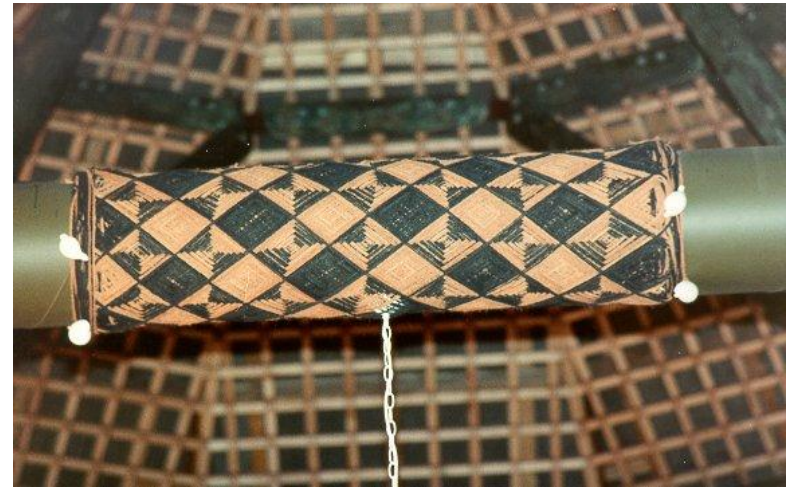
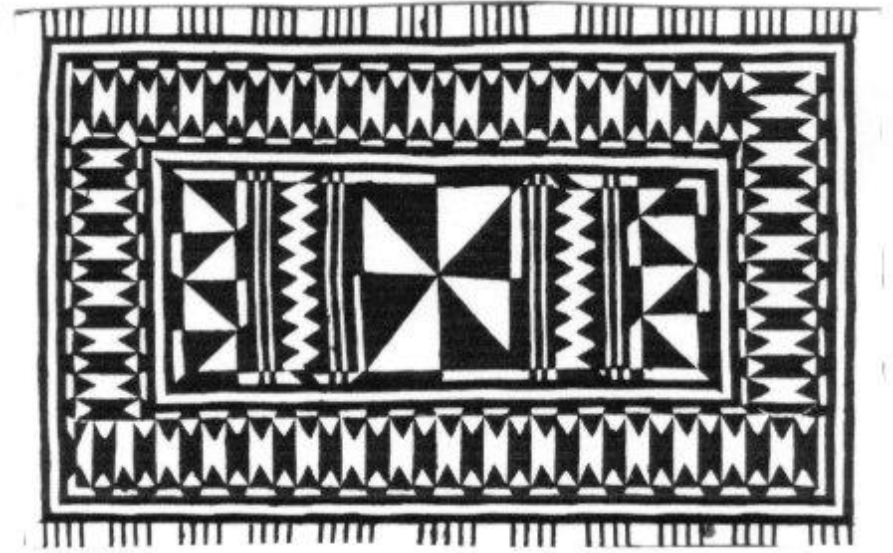


neolit



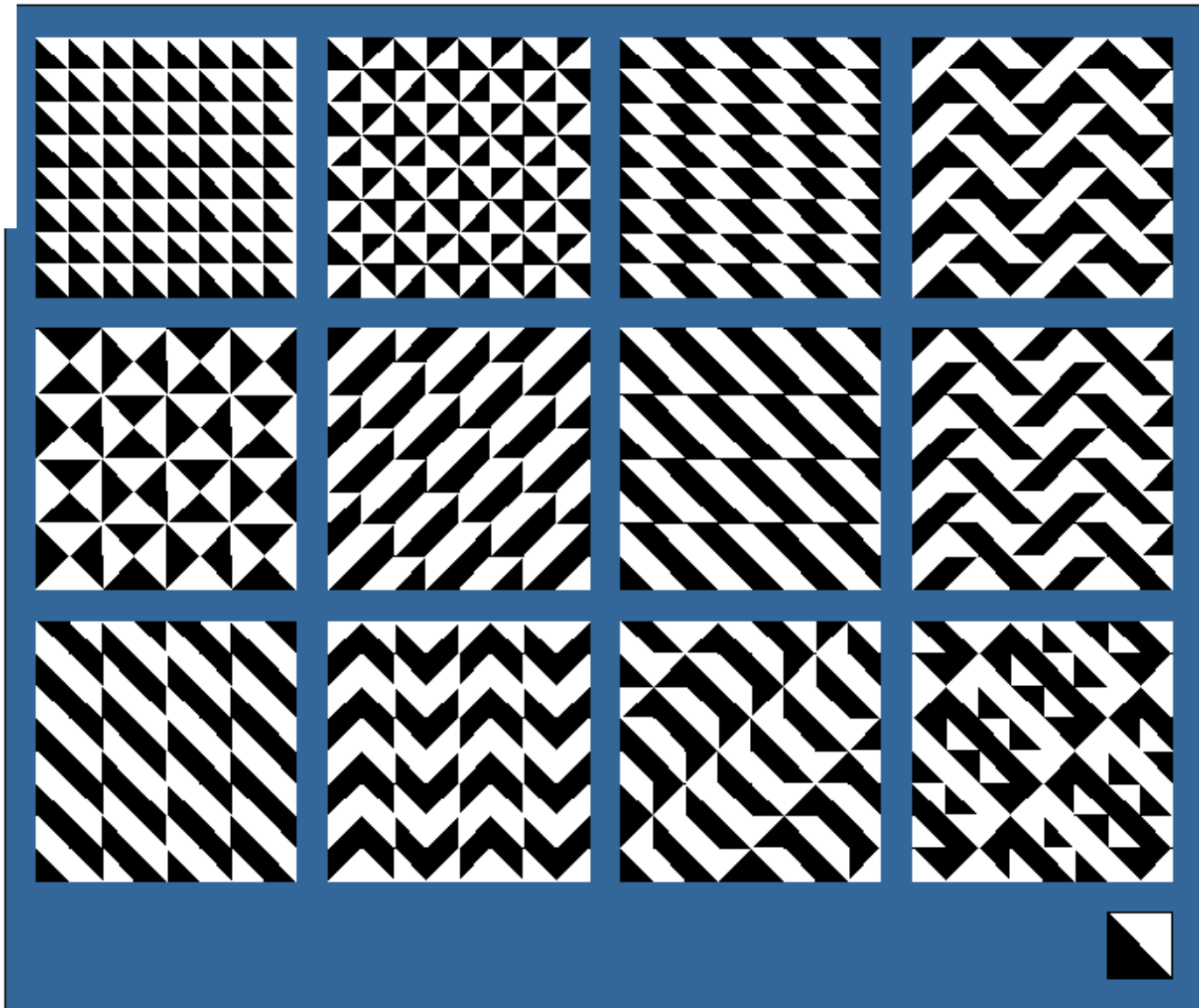
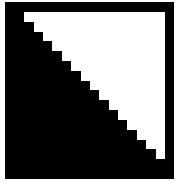
Mitla, Pañac Mexico, Zapotec



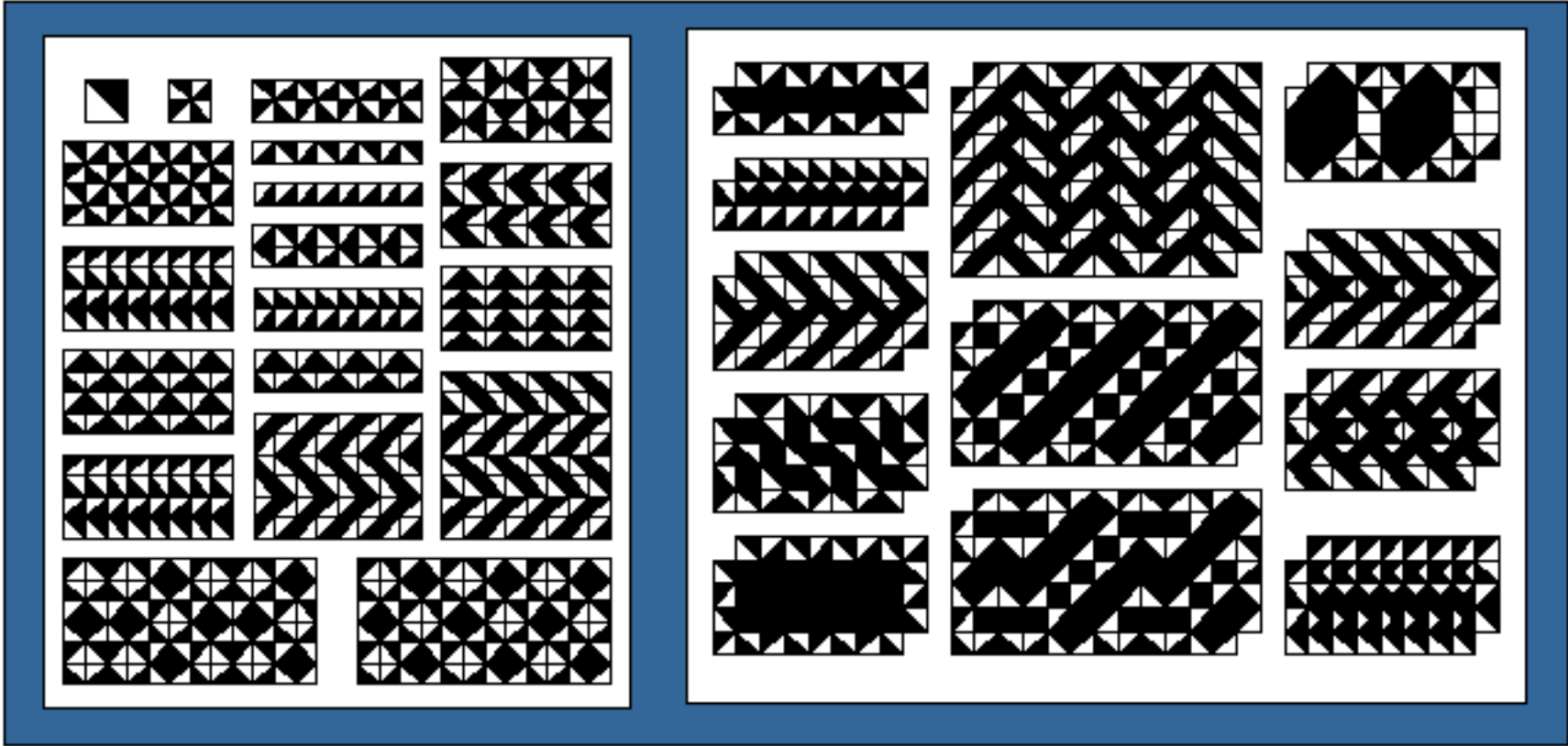
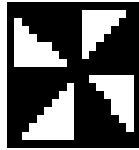
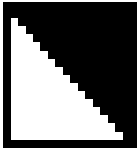


Wyspy Tonga

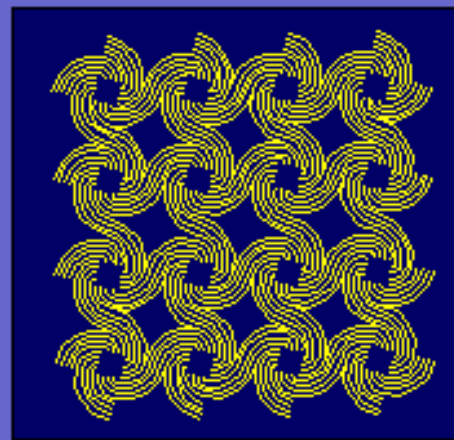
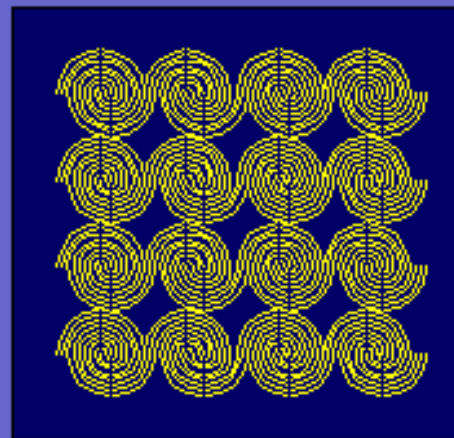
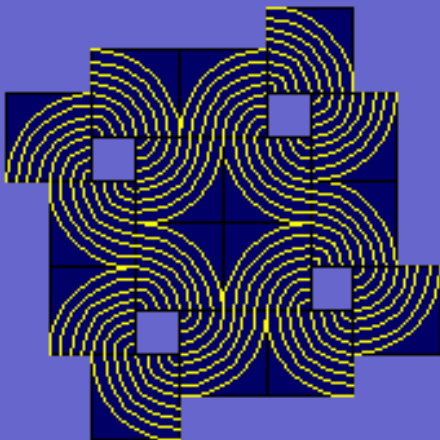
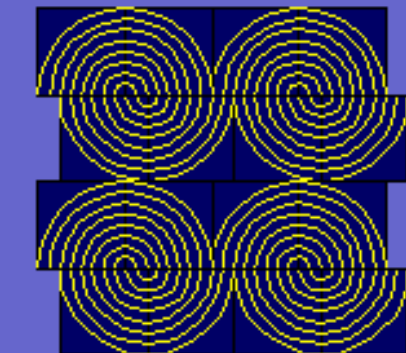
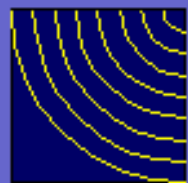
KAFELKI
OPTYCZNE

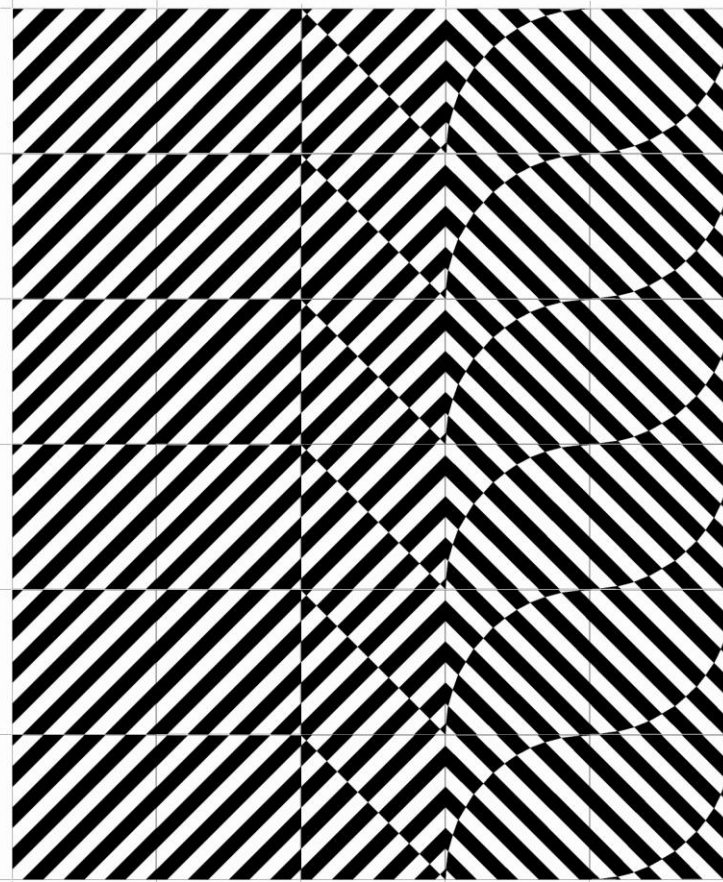
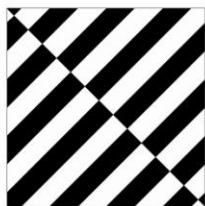
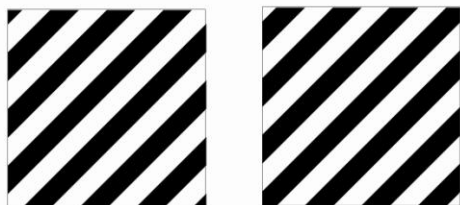


kafelki Trucheta

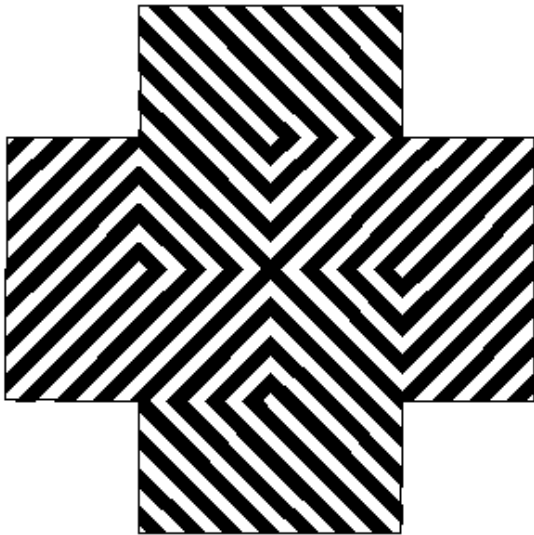
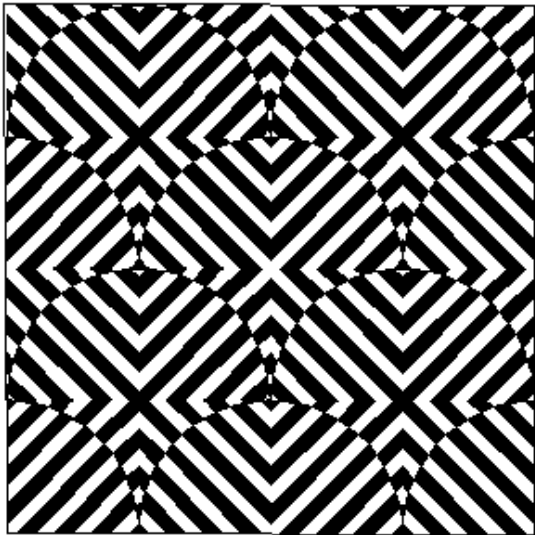
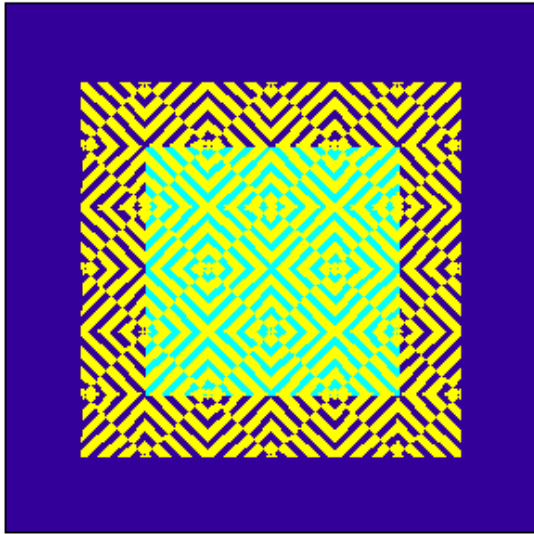
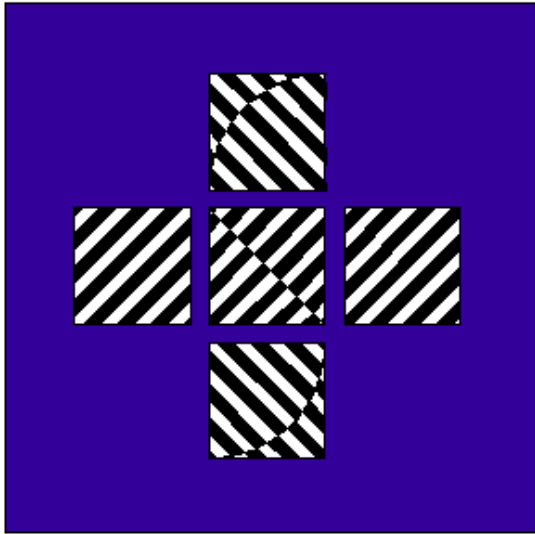


kafelki Trucheta



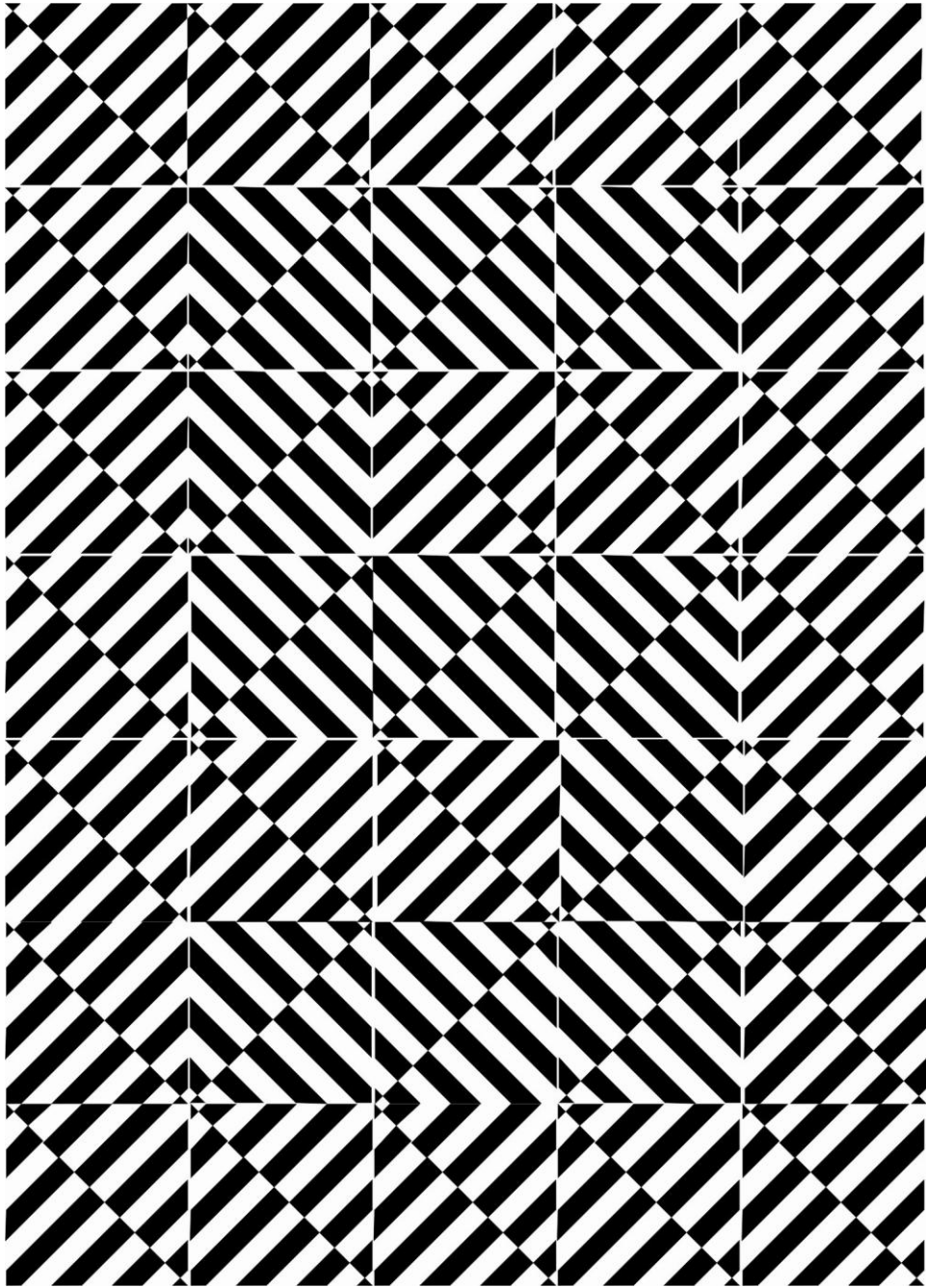


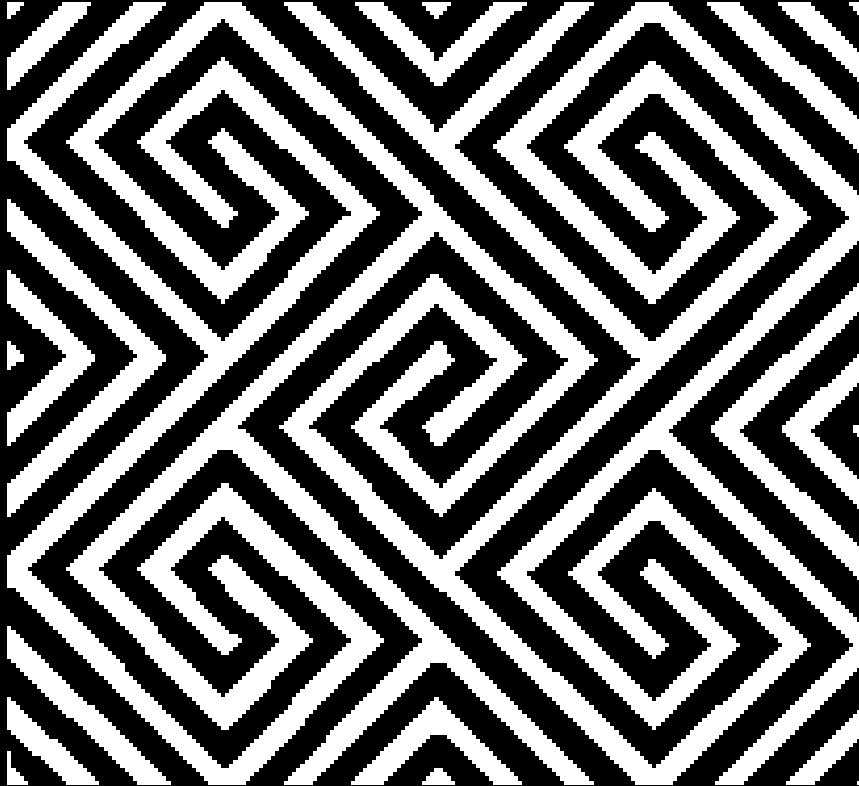
kafelki optyczne (op-tiles)



kafelki optyczne

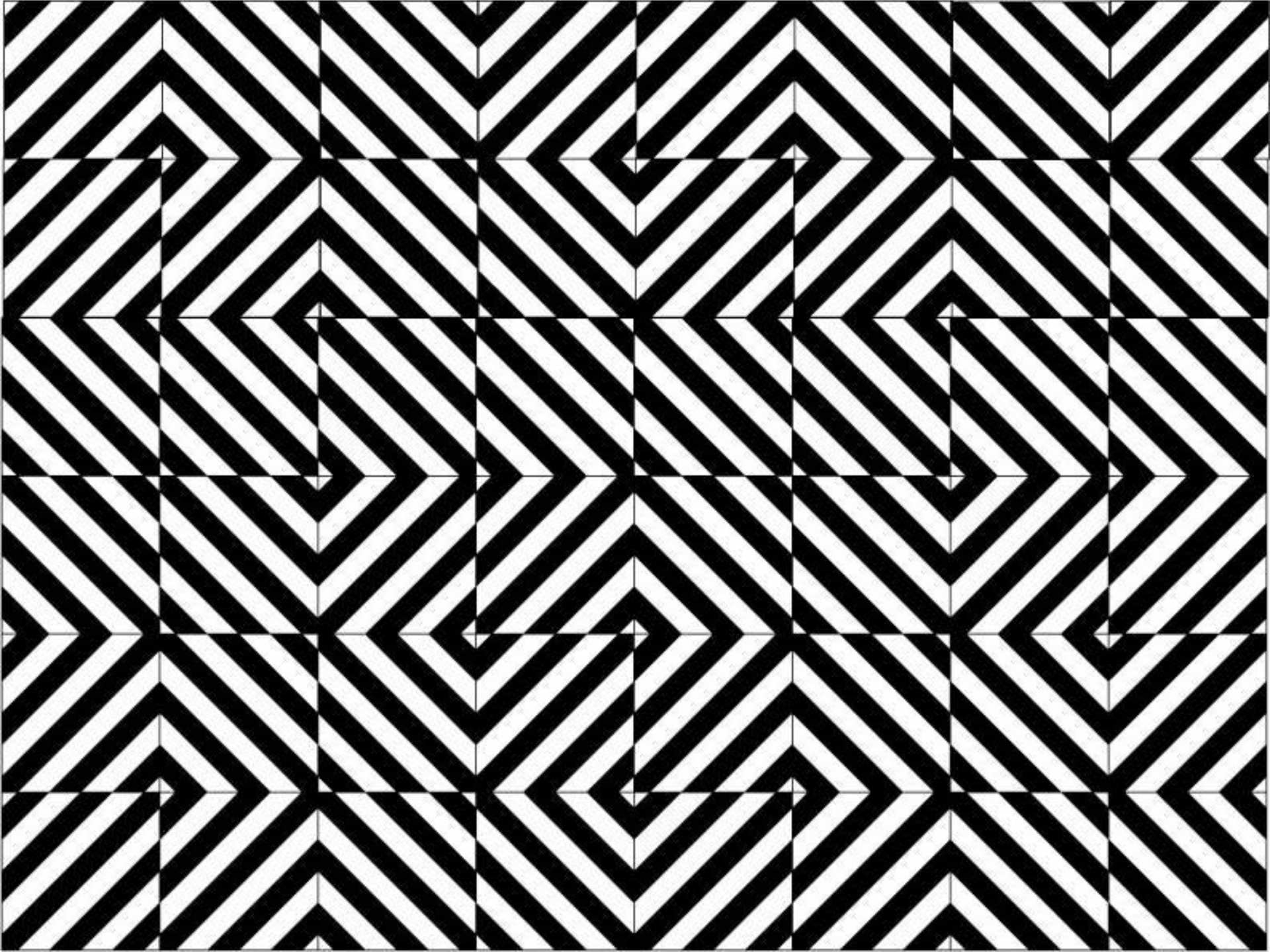


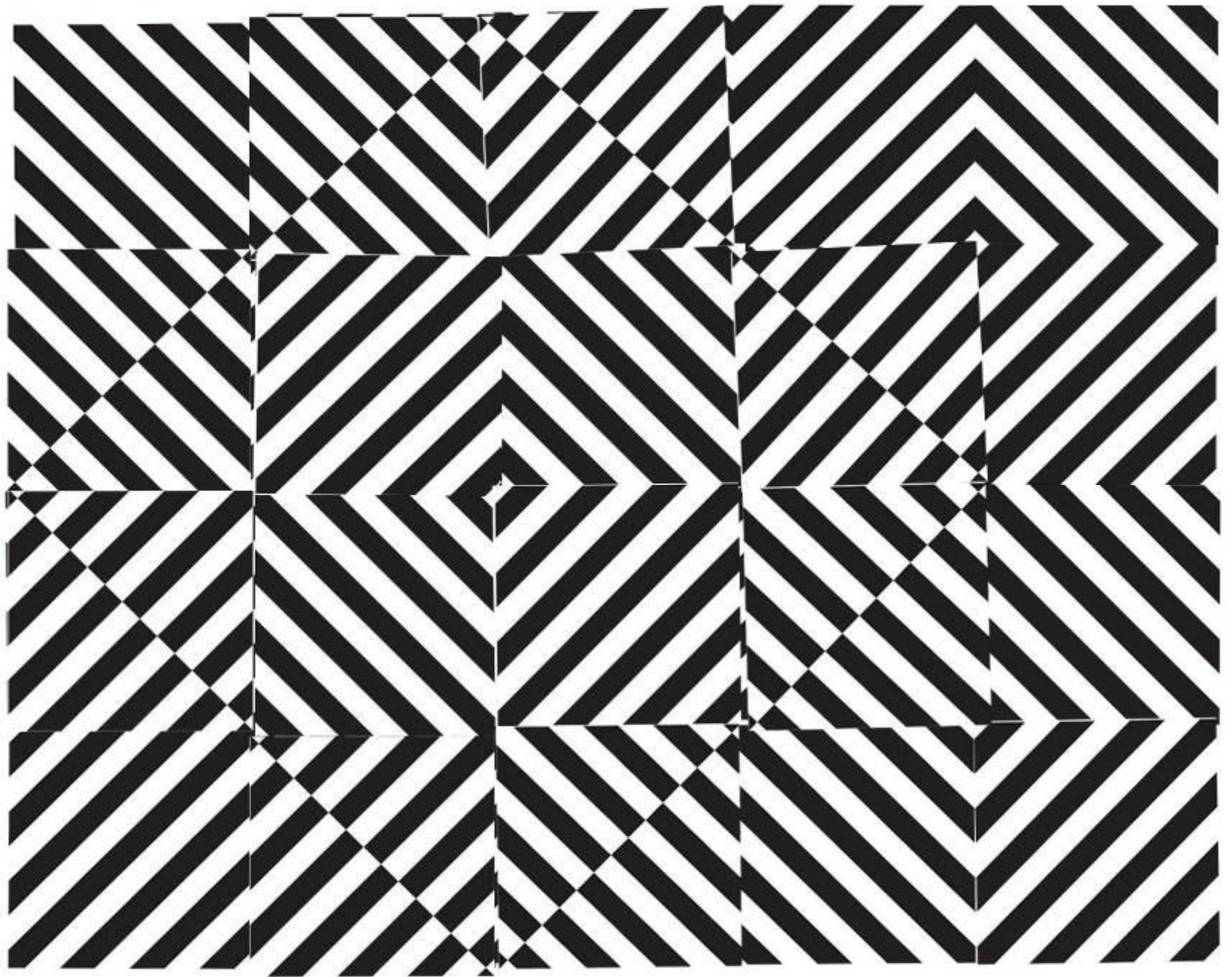


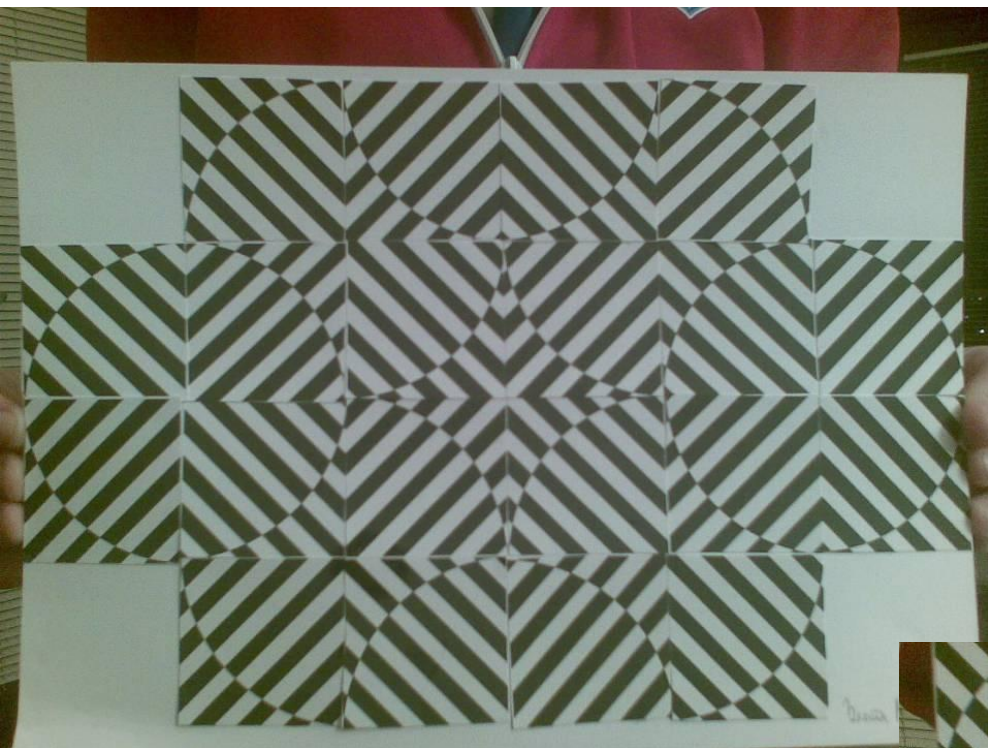


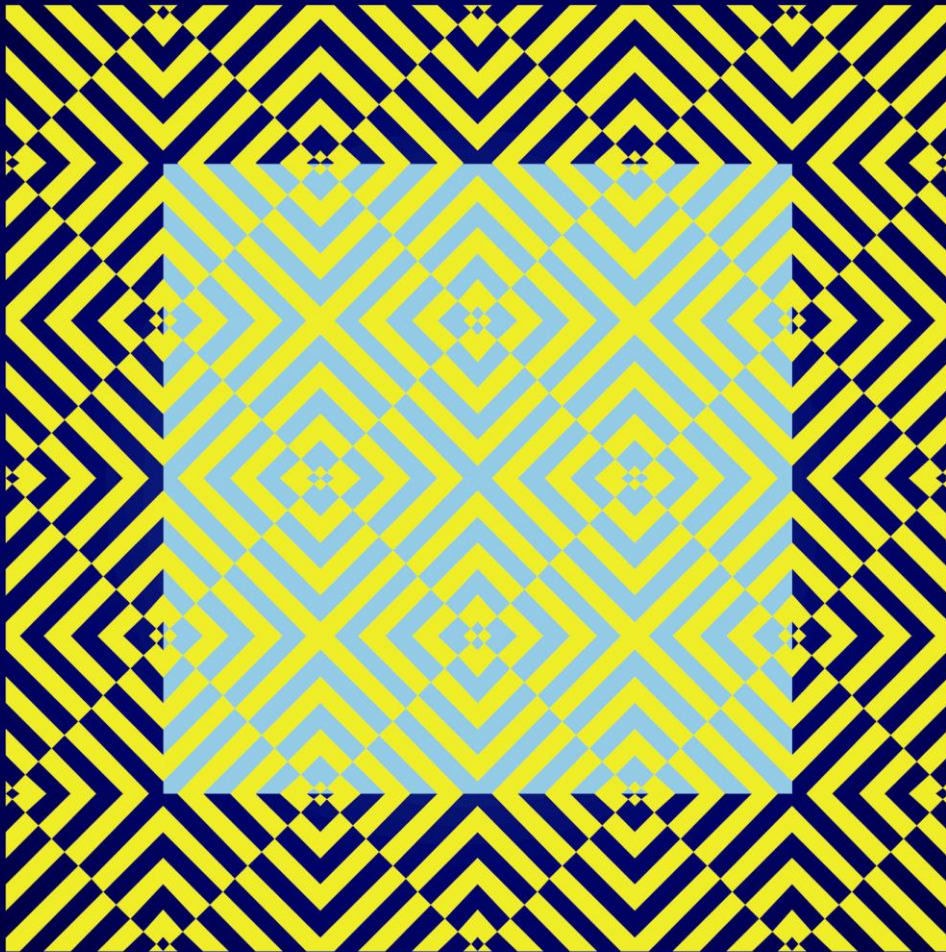
modularność

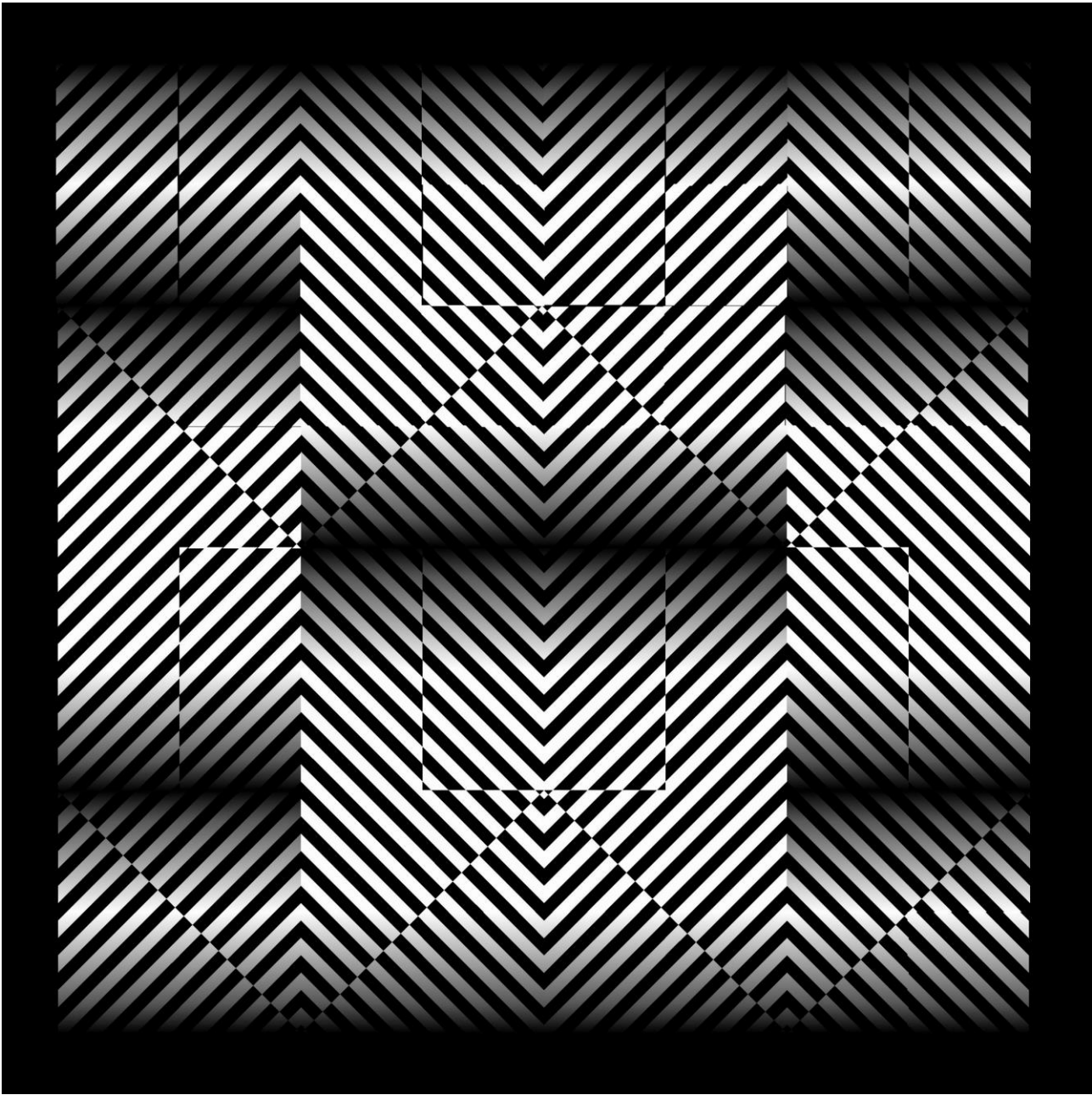


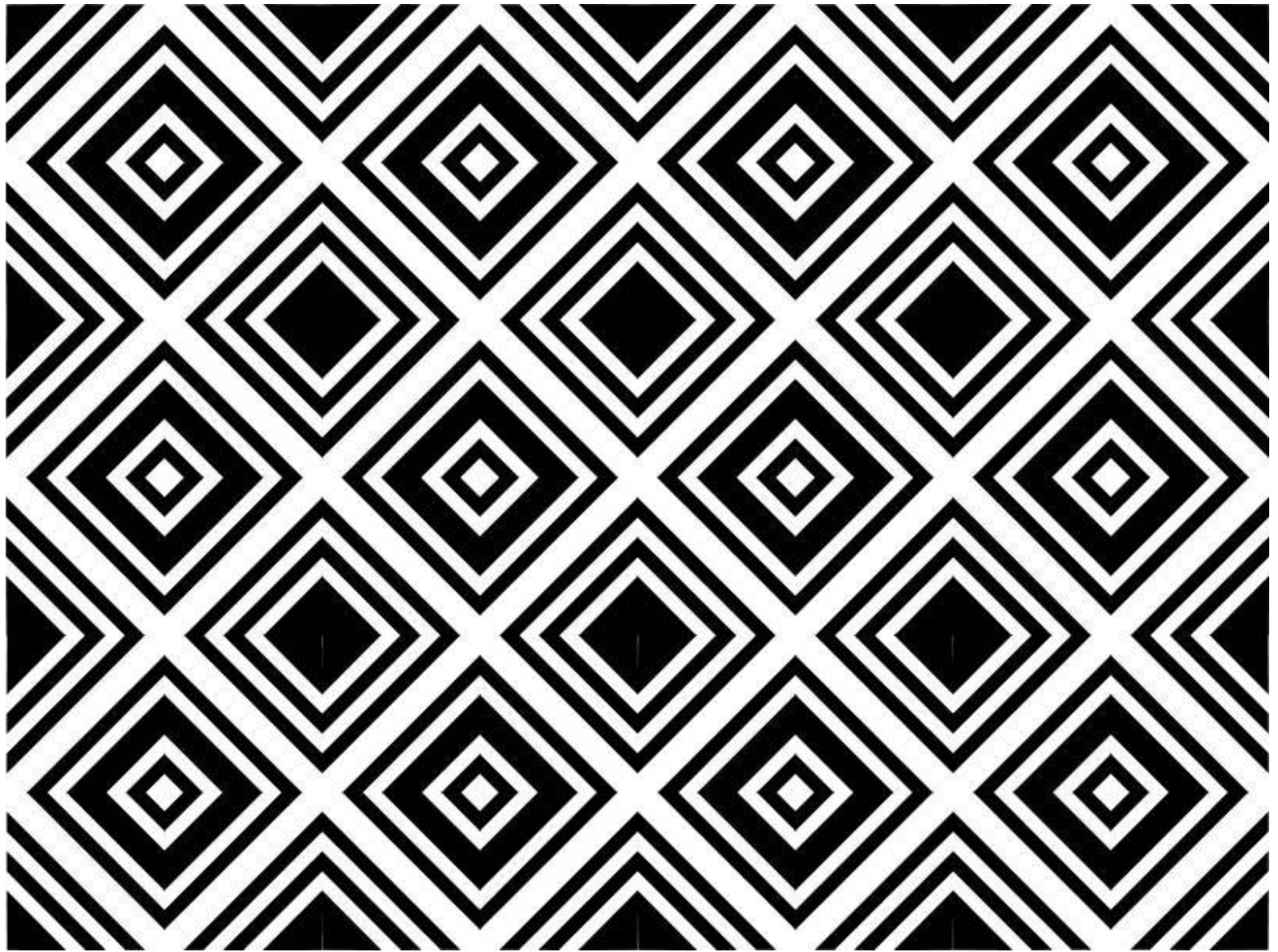


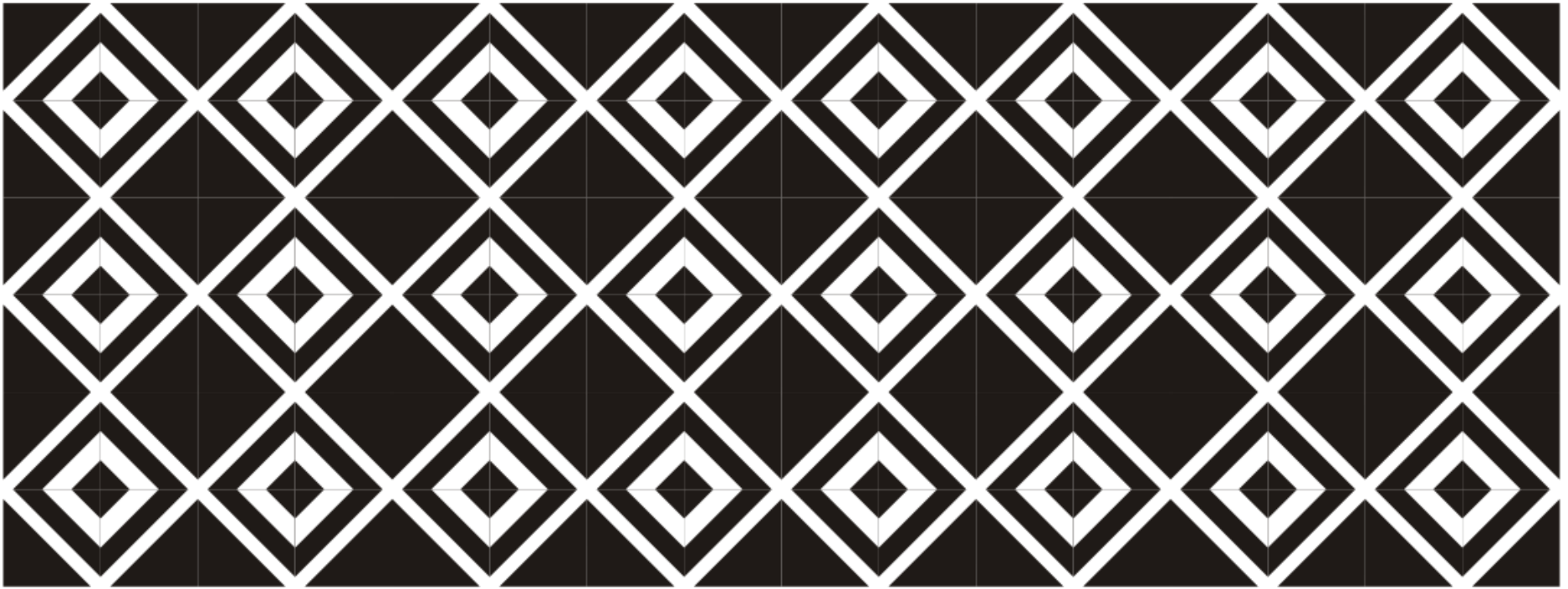


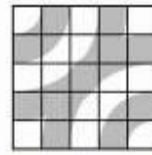
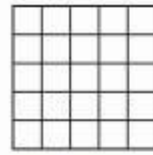


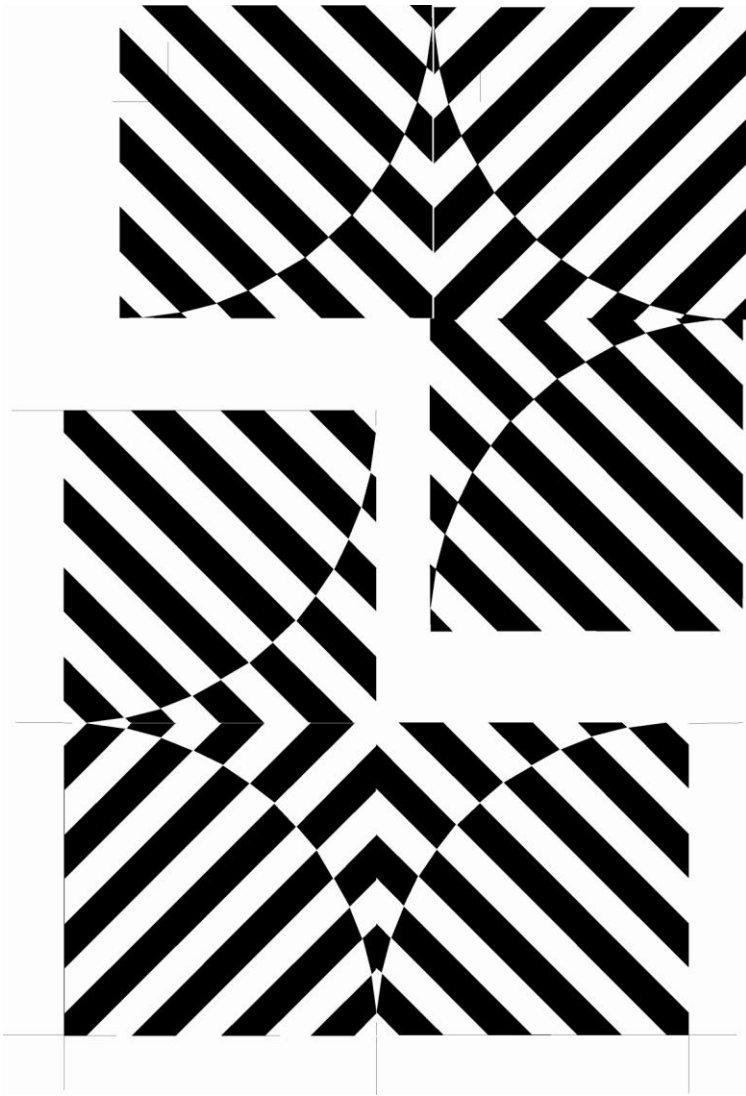




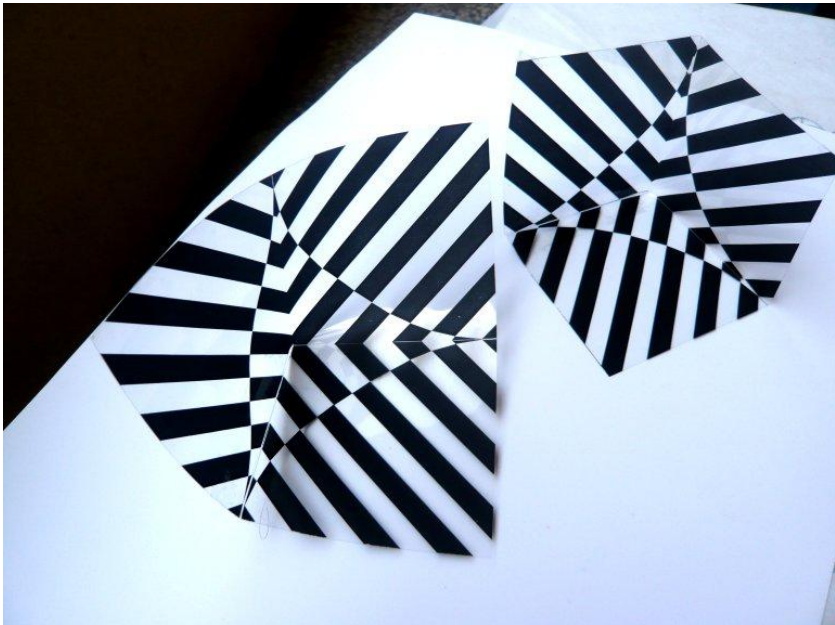
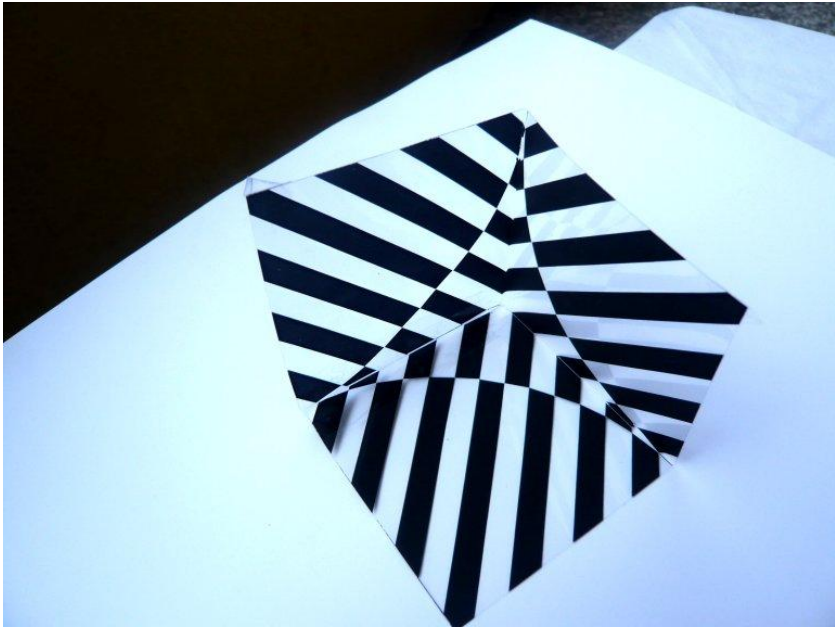


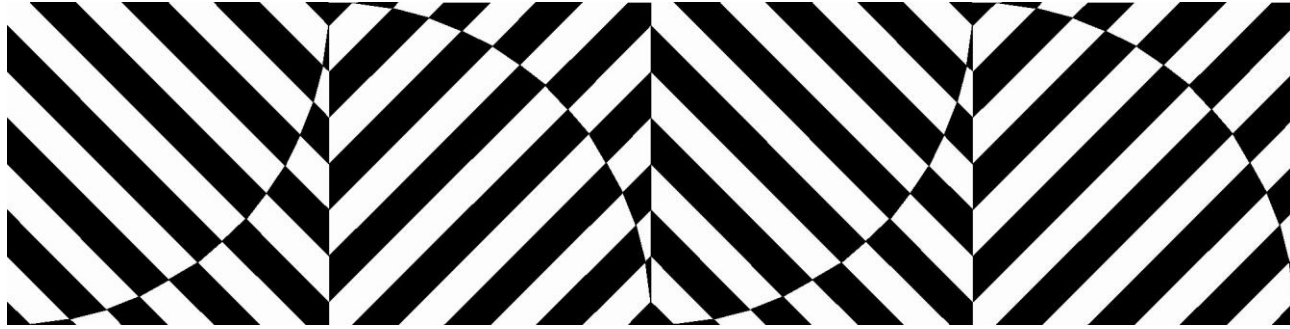


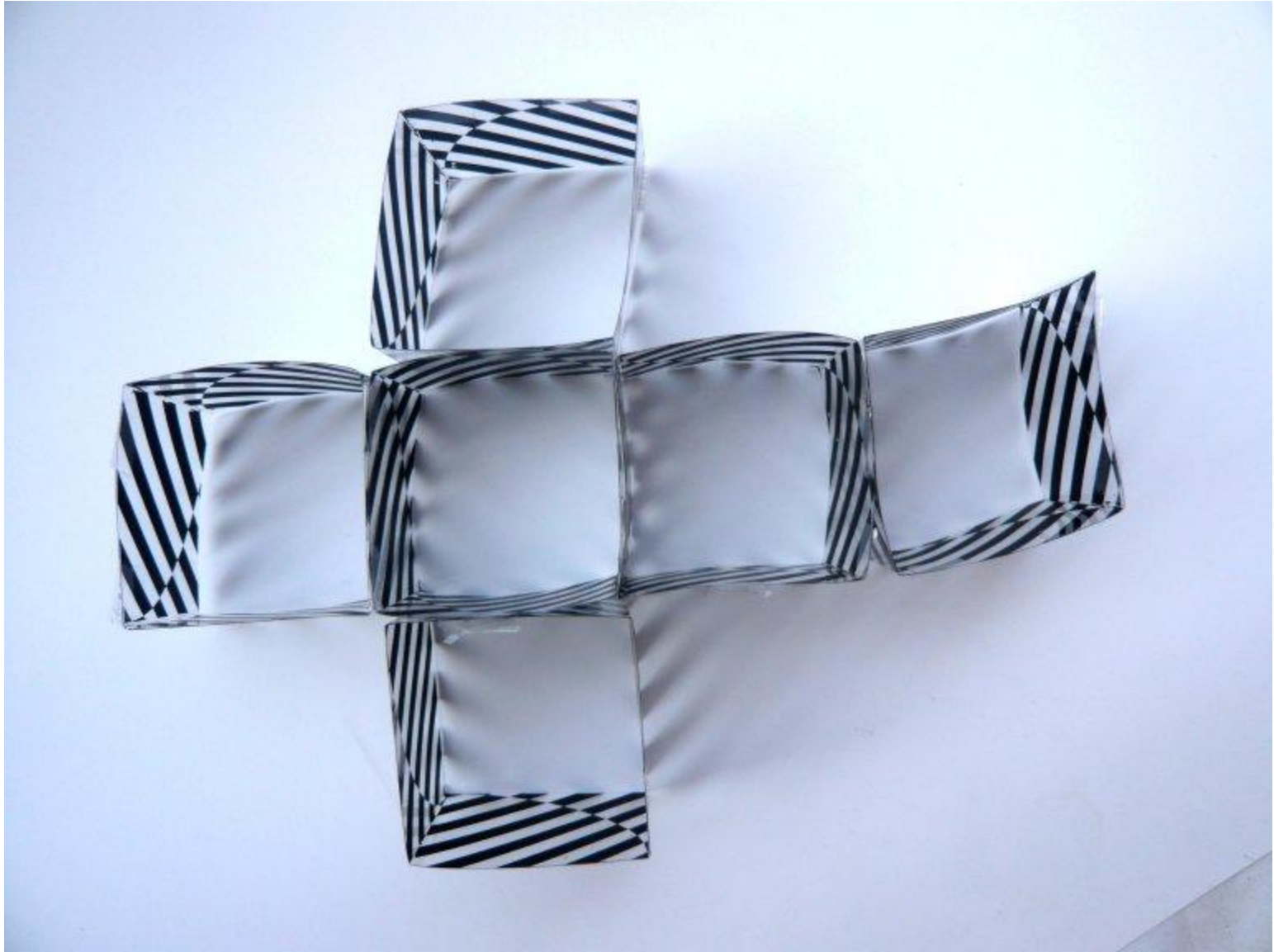


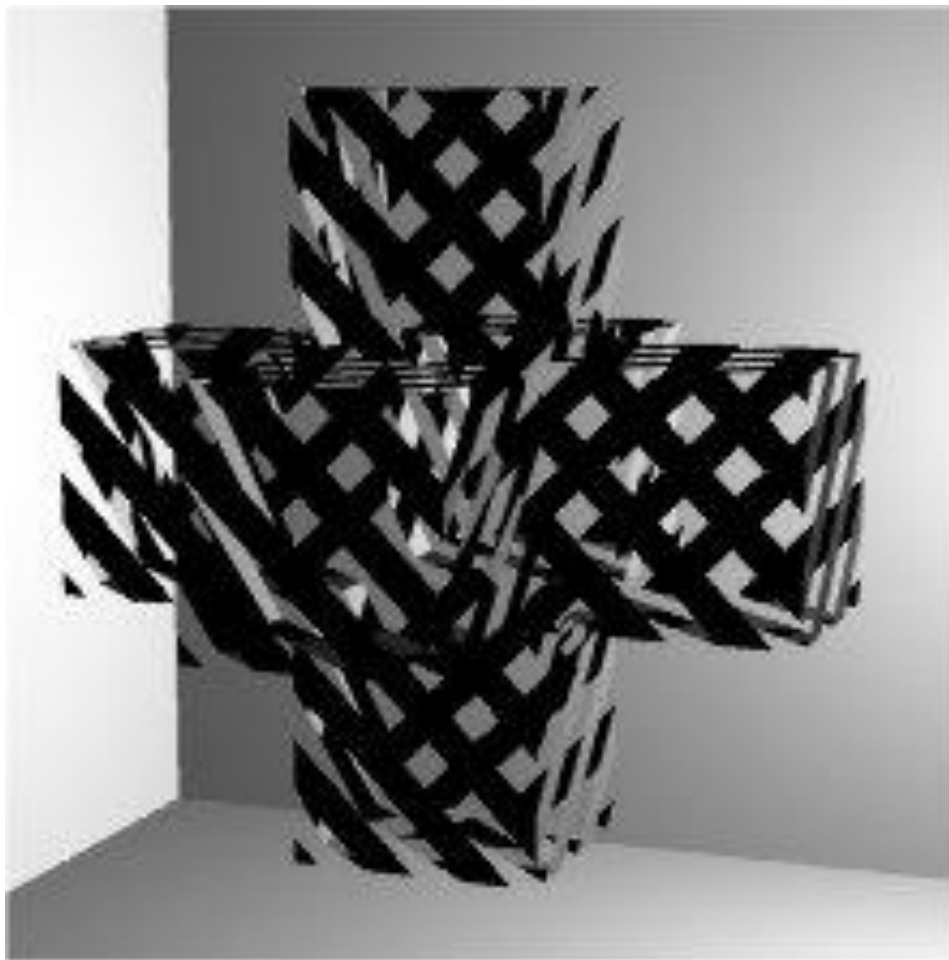


sześcian

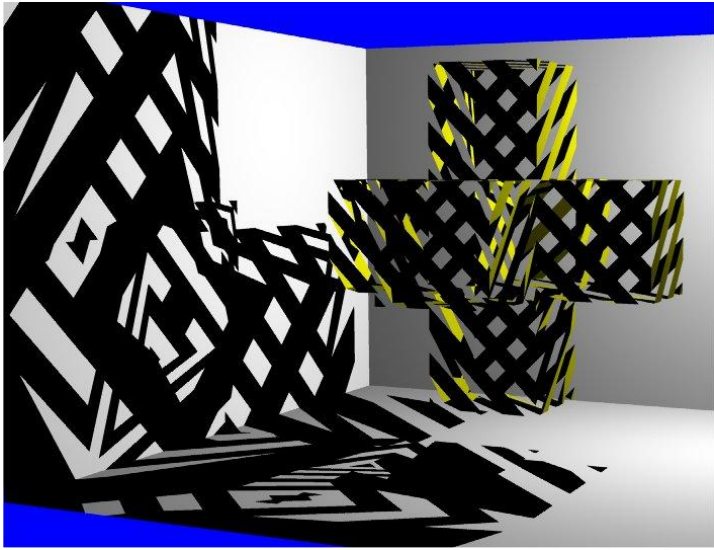


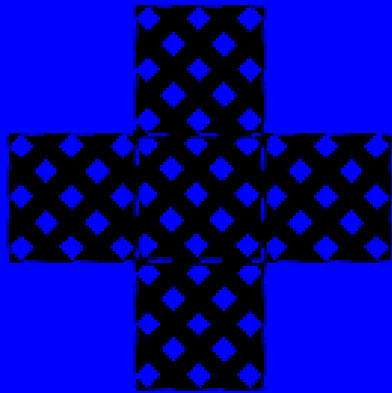






hiperszećian





Cele

- Wprowadzenie pojęć matematycznych i własności tych pojęć na poziomie wizualnym, bez definicji i wzorów. Dopiero potem formalizmy i symbolika.
- Eksperymenty z kształtem i symetrią.
- Rozpoznawanie struktur regularnych i ich elementów bazowych.
- Badanie typów symetrii, stopnia jej złożoności i różnorodności.
- Ogarnięcie abstrakcji geometrycznej, zajęcia interdyscyplinarne.

JOMILI CUBES

<http://www.youtube.com/watch?v=ytQsiz5l0Hg>

<http://www.youtube.com/watch?v=ZrCP0f62SEw>